

T10

2 BEDS | 2 BATHS | 1,093 SQ FT

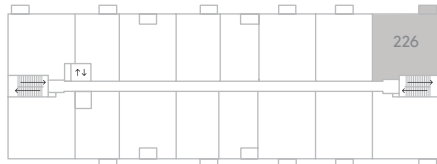
rent@trioliving.ca | trioliving.ca

2065 Portobello

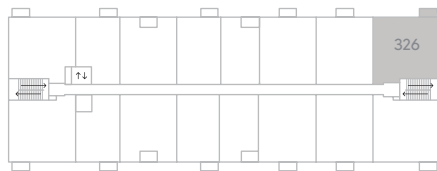


PORTOBELLO BLVD

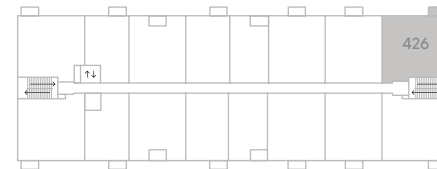
GROUND FLOOR - ACCESSIBLE



FLOOR 2 - ACCESSIBLE



FLOOR 3 - ACCESSIBLE



FLOOR 4 - ACCESSIBLE

