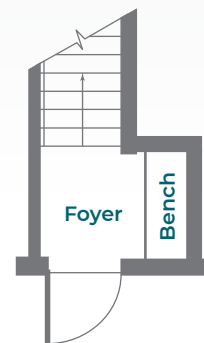
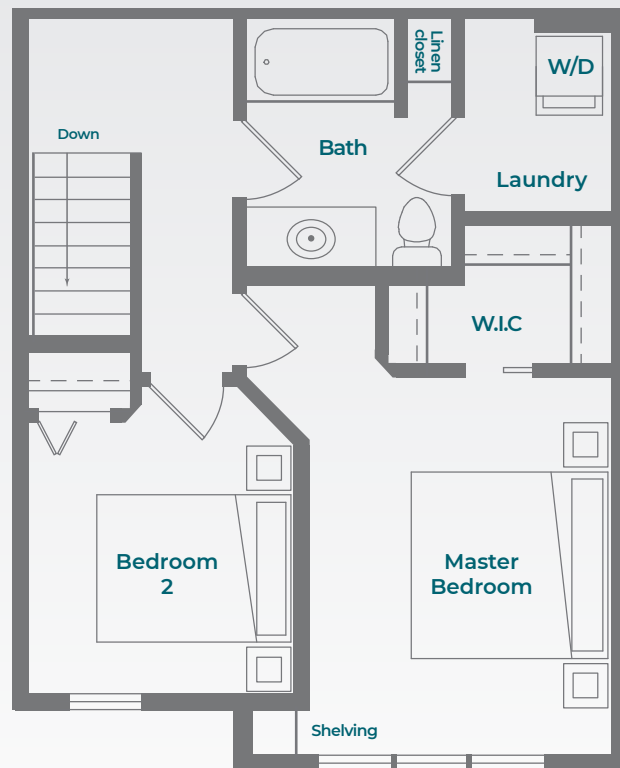
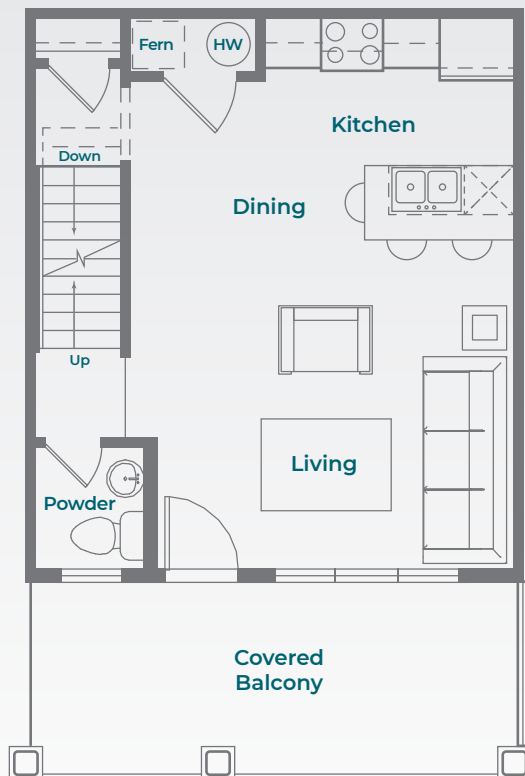


Luna

Inner Upper Town

2 Bed / 1.5 Bath / 987 SQ FT



Townhome living

- the privacy of a home, the perks of a community.

Tell us what's important to you... we can make it happen!

Luna

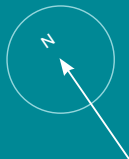
Inner Upper Town

2 Bed / 1.5 Bath / 987 SQ FT

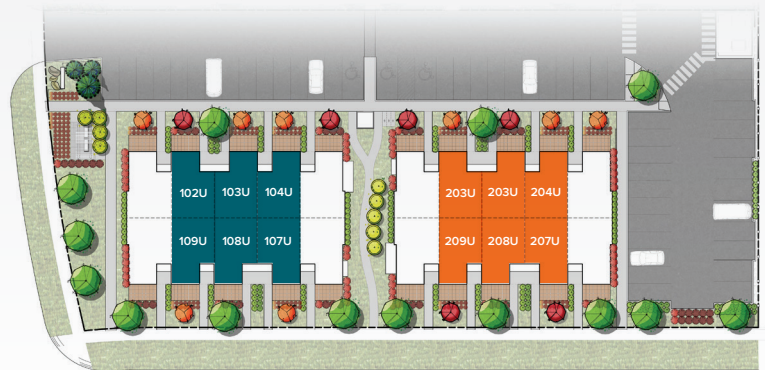
FEATURING

- Private Covered Front Entrance with Modern Exterior Finishes and Bench
- 9'1" Main Living Area Ceilings
- Luxury Vinyl Plank Flooring in Main Living Areas with Carpet in Bedrooms, Hall & Stairs
- Full Size Stainless Steel Fridge, Ceran Top Stove, Dishwasher and Over-the-Range Microwave
- Peninsula Kitchen Countertop with Under Counter Seating
- Pot Lights in Kitchen Ceiling
- Upgraded Kitchen Fixtures
- Large Windows Complete with Coverings
- Large Walk In Master Closet
- Linen Closet with Wire Shelving
- Additional Bathroom Vanity Storage
- In Suite Laundry
- Central Heat and Air Conditioning
- Engineered Interior Sprinkler System
- 20' x 8' Private Covered Balcony
- Pet Friendly

NOTE: Floorplans subject to change and may be mirror images. Room sizes, square footage, specifications, features, positioning, architectural elevations and outdoor spaces may vary per location.



85 Fiorentino Street



BUILDING

1

BUILDING

2

ELEMENT PHASE I



ELEMENT
Townhome Rentals

elementtownrentals.ca

204-415-6669