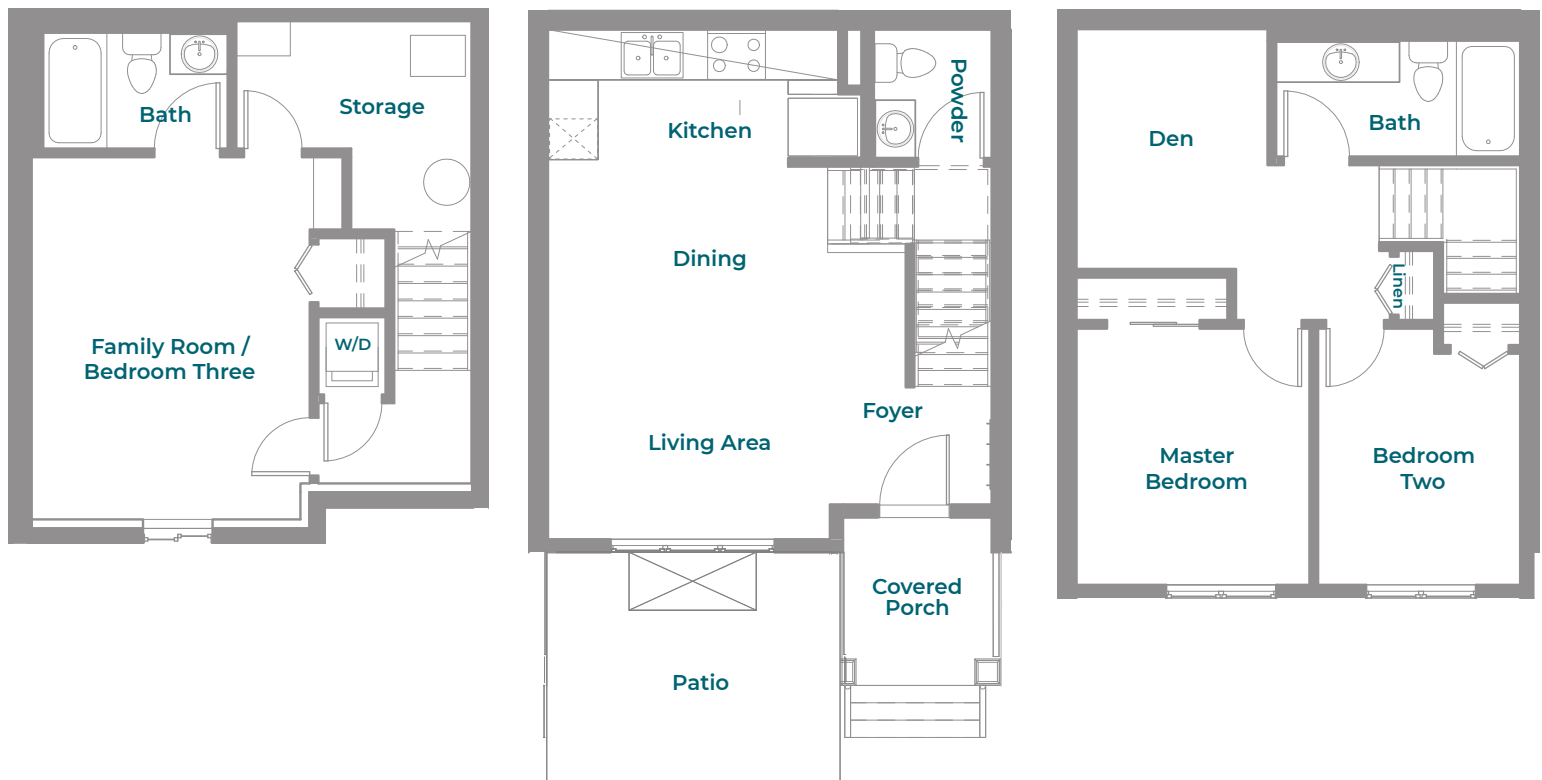


# Spry

## Full Town with Developed Basement

3 Bed + Den / 2.5 Bath / 1399 SQ FT



### Townhome living

- the privacy of a home, the perks of a community.  
Tell us what's important to you... we can make it happen!

# Spry Full Town with Developed Basement

**3 Bed +Den / 2.5 Bath / 1399 SQ FT**

## Element on Eaglewood

### FEATURING

- Flexible Open Den Space
- Developed Basement w/ 9ft Ceiling
- Full Sized Stainless Steel Fridge, Ceran Top Stove, Dishwasher and Over the Range Microwave
- Pot Lights in Kitchen Ceiling
- Upgraded Kitchen & Bath Fixtures w/ Rain Shower Head
- Two and a Half Bathrooms
- Additional Bathroom Vanity Storage
- In Suite Laundry
- Linen Closet w/ Wire Shelving
- In Suite Storage Nook
- Large Windows w/ Window Coverings
- Central Gas Heating & A/C
- Luxury Vinyl Plank Flooring w/ Carpet in Bedroom, Hall & Stairs
- Private Patio & Covered Front Porch
- Pet Friendly



**NOTE:** Floorplans subject to change and may be mirror images. Room sizes, square footage, specifications, features, positioning, architectural elevations and outdoor spaces may vary per location.

**140 Eaglewood Drive**  
[hello@elementtownrentals.ca](mailto:hello@elementtownrentals.ca)



**ELEMENT**  
Townhome Rentals

[elementtownrentals.ca](https://elementtownrentals.ca)  
**204-415-6669**