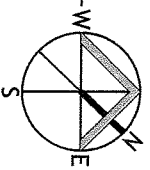
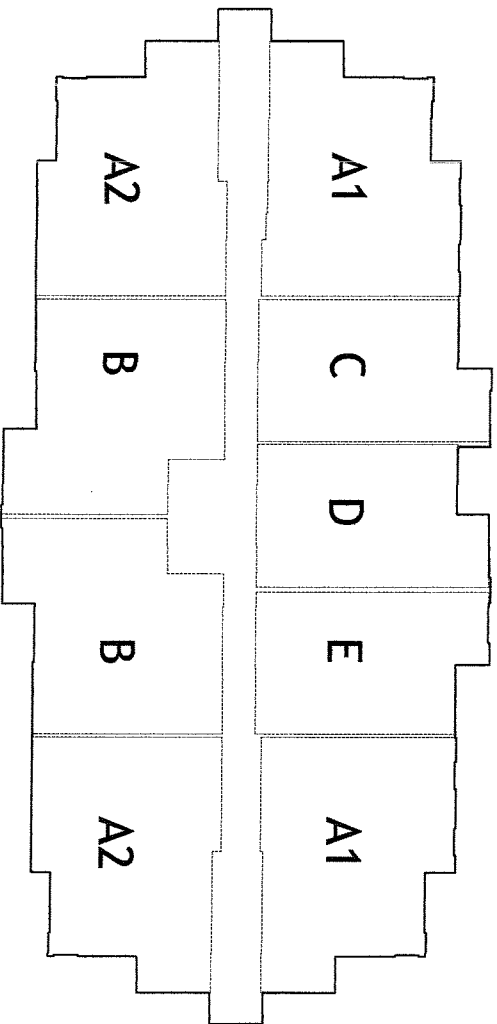


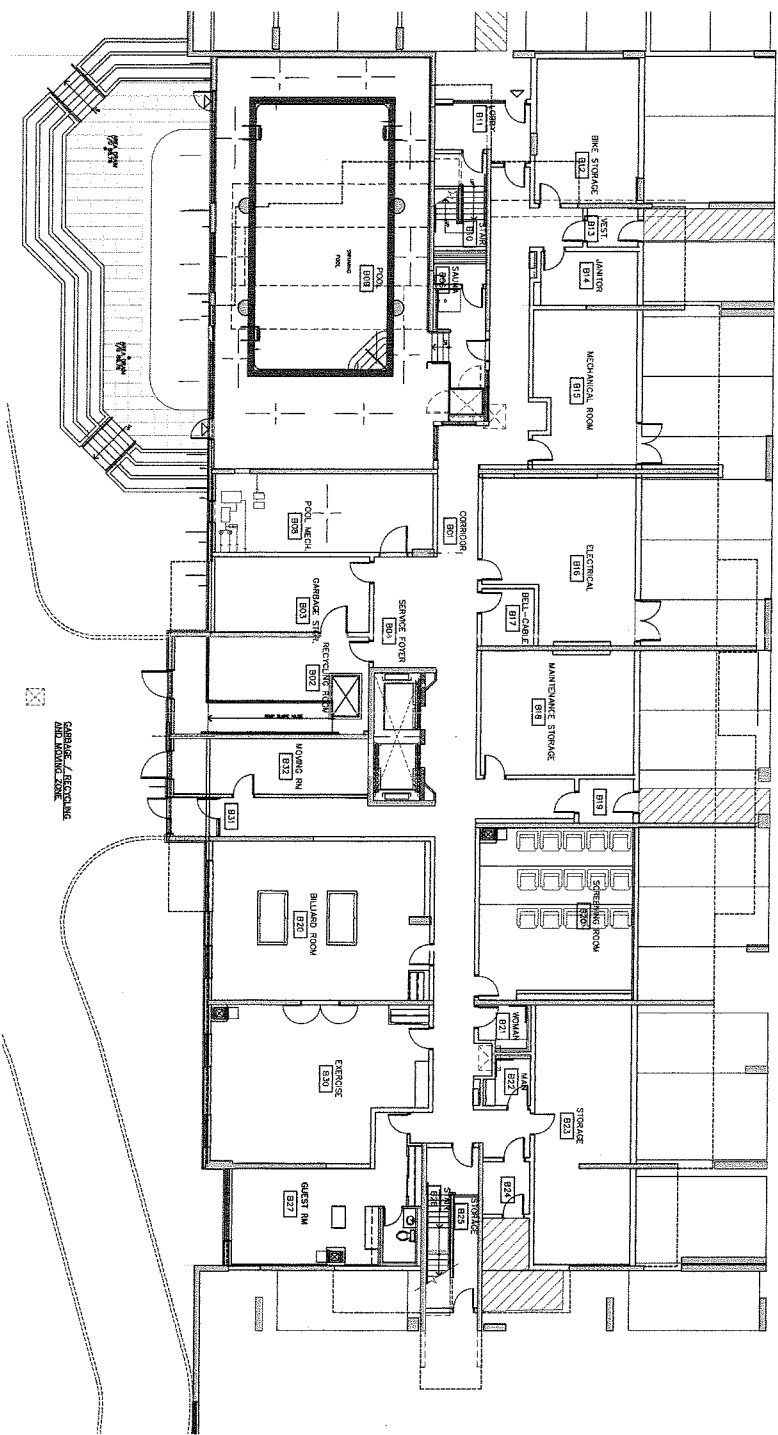
# UNIT LAYOUTS

## **144 BARRETT COURT** Kingston, Ontario

### ATTACHED:

- UNIT A1 GROUND FLOOR
- UNIT A2 GROUND FLOOR
- UNIT B GROUND FLOOR
- UNIT C GROUND FLOOR
- UNIT E GROUND FLOOR
- UNIT A1 TYPICAL FLOOR
- UNIT A2 TYPICAL FLOOR
- UNIT B TYPICAL FLOOR
- UNIT C TYPICAL FLOOR
- UNIT D TYPICAL FLOOR
- UNIT E1 TYPICAL FLOOR





UNDERGROUND GARAGE  
B35

1.1 BASEMENT FLOOR PLAN  
SHEET 1 OF 10

DO NOT SCALE DRAWING  
CHECK AND SIGN ALL DIMENSIONS BEFORE  
CONSTRUCTION OF THE WORK OR CONSTRUCTION  
UNLESS STAMPED AND SIGNED BY THE CONSULTANT.  
CONFORMANCE WITH THE DIVISION BUILDING CODE  
IS ASSUMED UNLESS NOTED OTHERWISE.

DATE	DESCRIPTION
11/26/2024	ISSUED FOR PERMIT
11/26/2024	ISSUED FOR PERMIT
11/26/2024	ISSUED FOR PERMIT
11/26/2024	ISSUED FOR PERMIT

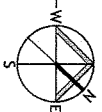
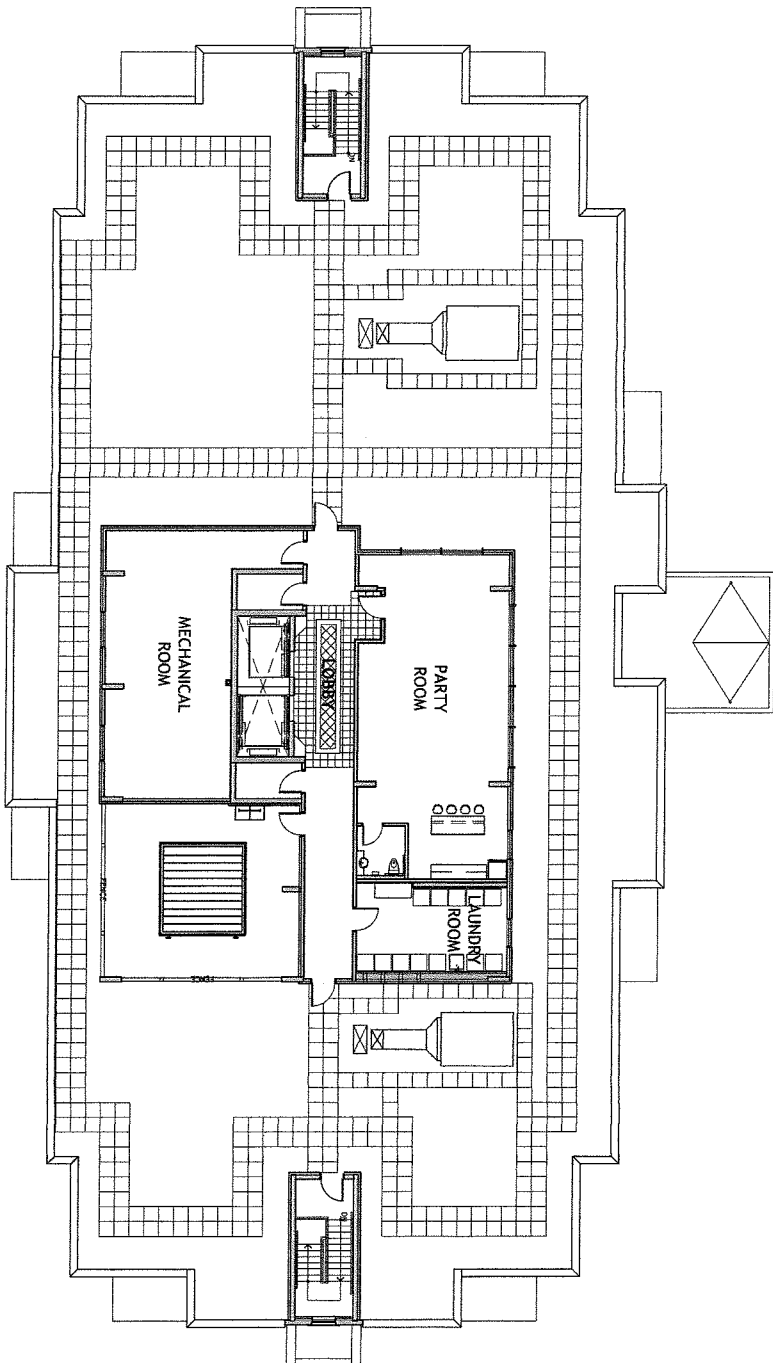
NOTE: ALL DIMENSIONS SHALL BE TAKEN FROM THE FACE TO THE FACE OF THE MEMBER UNLESS NOTED OTHERWISE. TO BE IN TYPICAL UNLESS NOTED OTHERWISE. ALL DIMENSIONS SHALL BE TAKEN FROM THE FACE TO THE FACE OF THE MEMBER UNLESS NOTED OTHERWISE. ALL DIMENSIONS SHALL BE TAKEN FROM THE FACE TO THE FACE OF THE MEMBER UNLESS NOTED OTHERWISE.

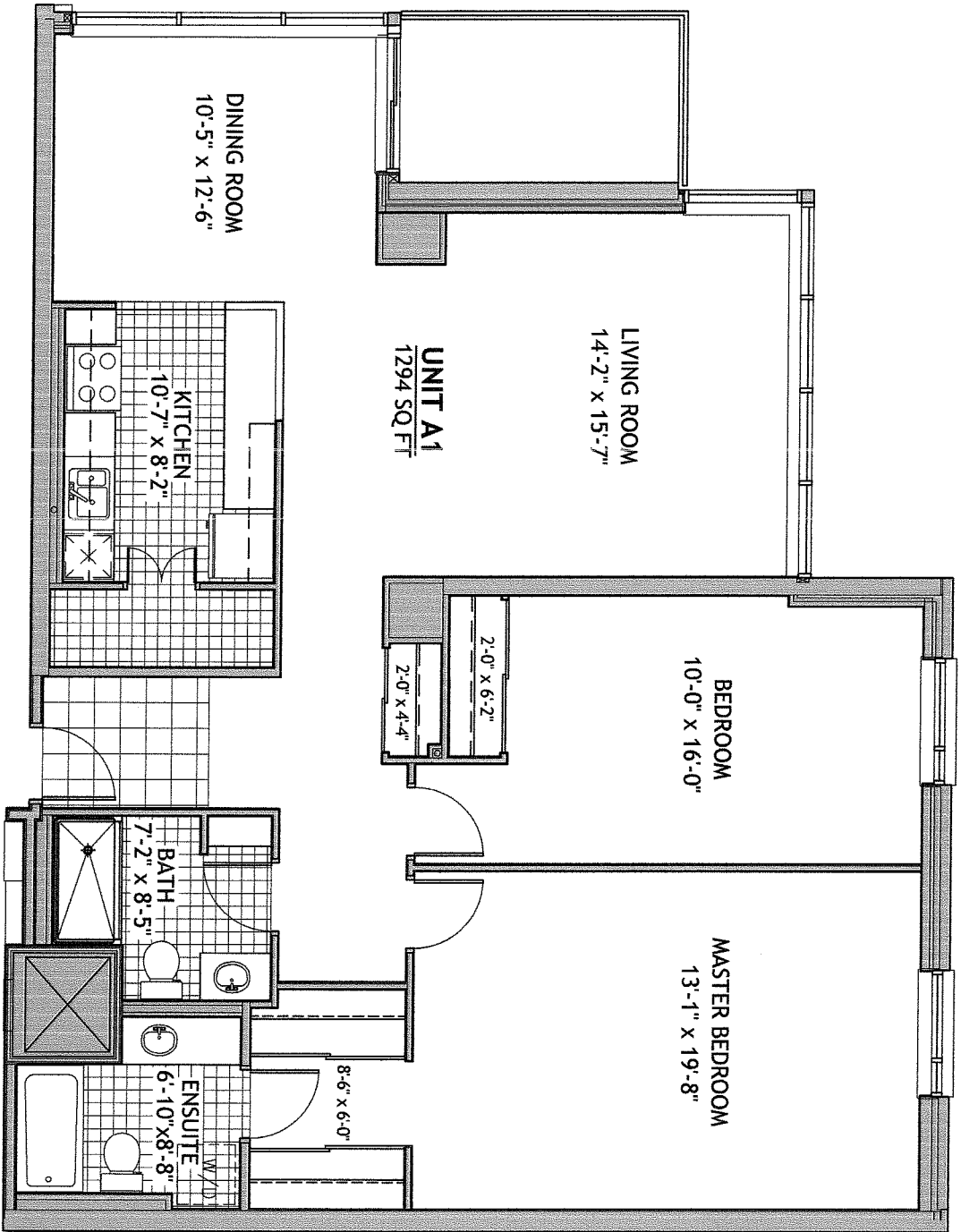
Alexander  
Wilson  
Architect  
Inc.

14 BARRETT COURT  
APARTMENT BUILDING  
BARRRETT COURT  
FLOOR PLAN

Project No. 1100  
Drawing No. A01D

**PENTHOUSE & ROOF PLAN**  
**144 BARRETT COURT**  
Kingston, Ontario

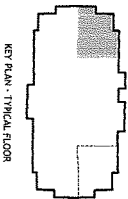
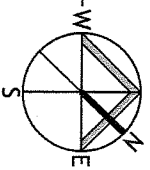




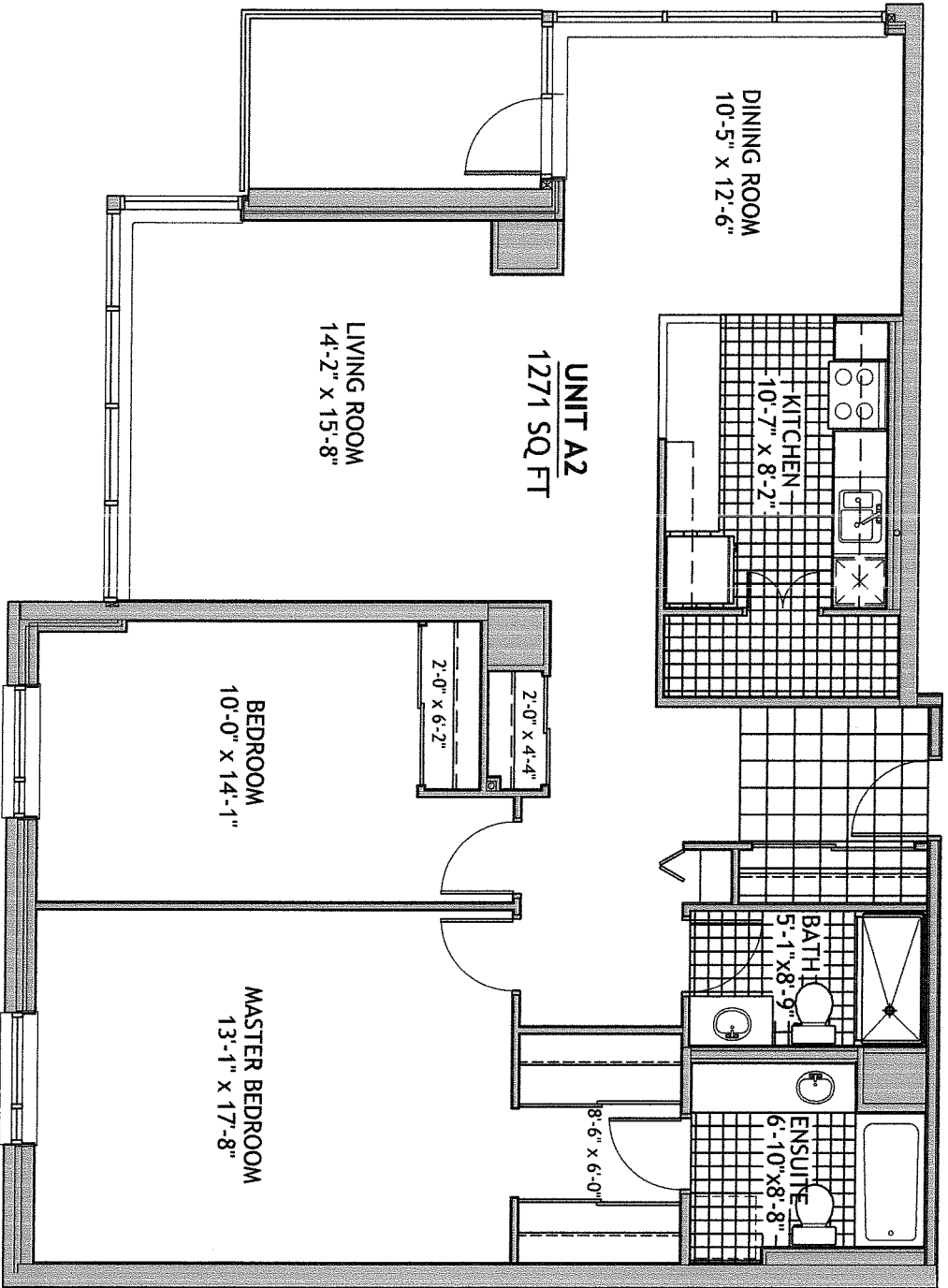
# UNIT A1 TYPICAL FLOOR

## 144 BARRETT COURT

Kingston, Ontario



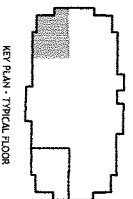
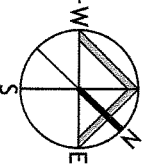
KEY PLAN - TYPICAL FLOOR



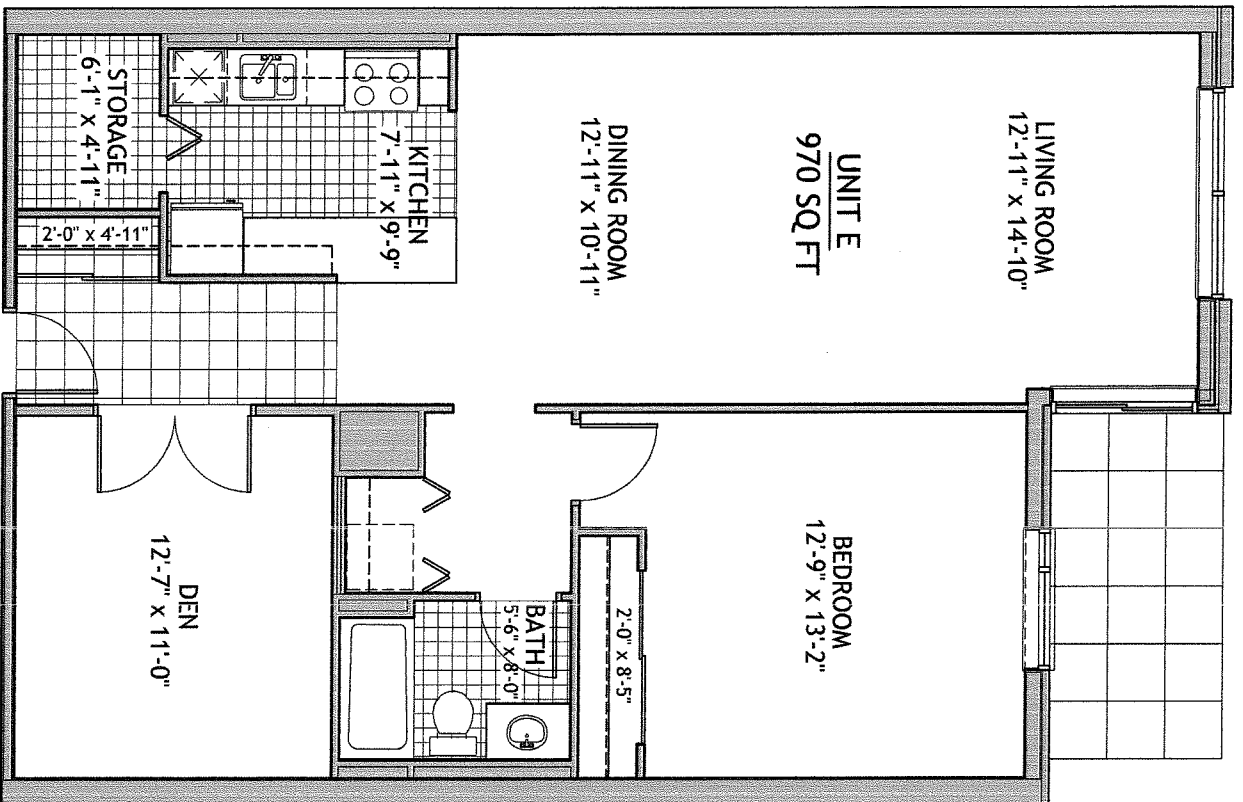
**UNIT A2 TYPICAL FLOOR**

**144 BARRETT COURT**

Kingston, Ontario



KEY PLAN - TYPICAL FLOOR



**UNIT E**  
**970 SQ FT**

**LIVING ROOM**  
**12'-11" x 14'-10"**

**BEDROOM**  
**12'-9" x 13'-2"**

**DINING ROOM**  
**12'-11" x 10'-11"**

**KITCHEN**  
**7'-11" x 9'-9"**

**BATH**  
**5'-6" x 8'-0"**

**DEN**  
**12'-7" x 11'-0"**

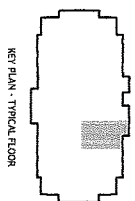
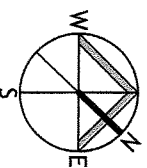
**STORAGE**  
**6'-1" x 4'-11"**

**2'-0" x 4'-11"**

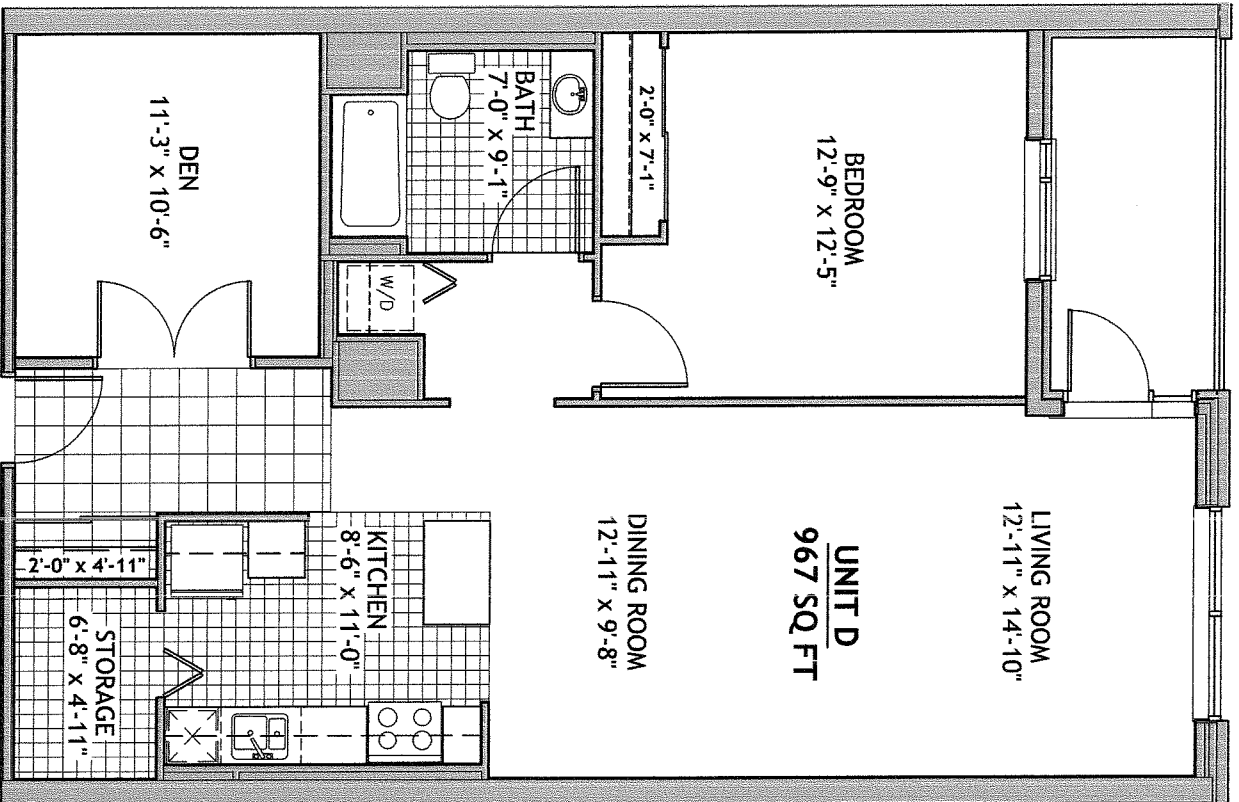
**2'-0" x 8'-5"**

**UNIT E TYPICAL FLOOR**  
**144 BARRETT COURT**

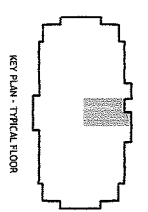
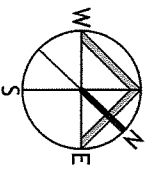
Kingston, Ontario



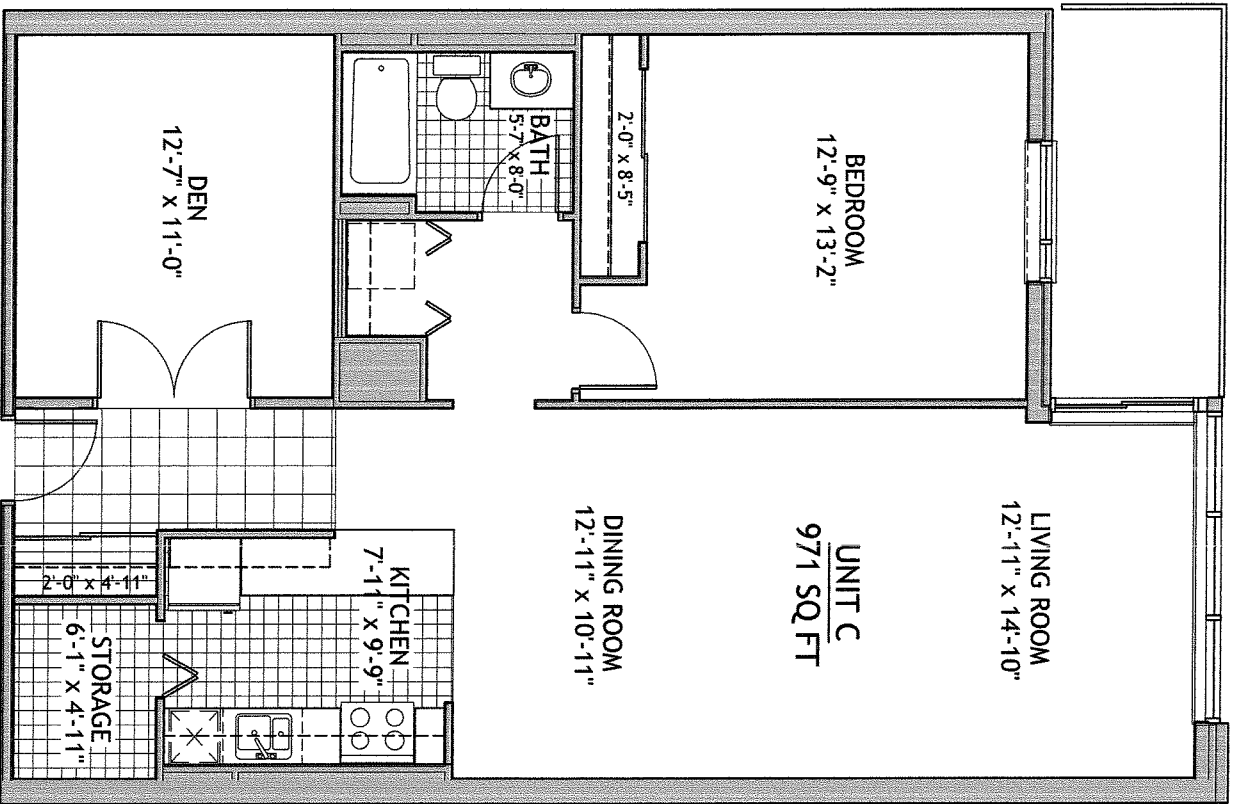
REV PLAN - TYPICAL FLOOR



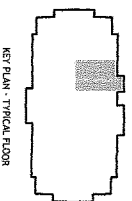
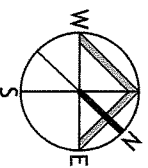
**UNIT D TYPICAL FLOOR**  
**144 BARRETT COURT**  
 Kingston, Ontario



KEY PLAN - TYPICAL FLOOR



**UNIT C TYPICAL FLOOR**  
**144 BARRETT COURT**  
 Kingston, Ontario



KEY PLAN - TYPICAL FLOOR





**UNIT B TYPICAL FLOOR**  
**144 BARRETT COURT**  
 Kingston, Ontario

