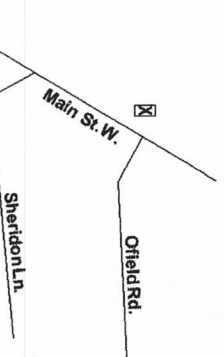


**NOTES**

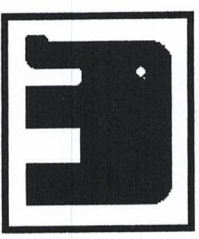
**FOR INFORMATION  
CONTACT US AT  
(905) 527 4232**



**DETAILS**

- LAUNDRY FACILITIES IN BUILDING
- PARKING AVAILABLE
- WIRED FOR HIGH SPEED INTERNET AND CABLE

**WEST PARK TOWER**  
 1760 MAIN STREET WEST  
 UNIT # 9 (E. & O. E.)  
 APPROX. 640 SQ. F.



**THE EFFORT TRUST  
 COMPANY**

BALCONY

LIVING ROOM

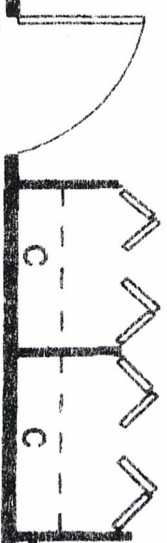
DINING ROOM

BEDROOM  
(13' x 12')

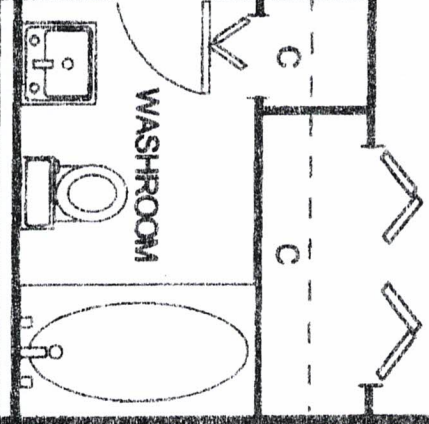
(20' x 20')



KITCHEN



WASHROOM



NOTES

FOR INFORMATION  
CONTACT US AT  
(905) 527 4232

**DETAILS**

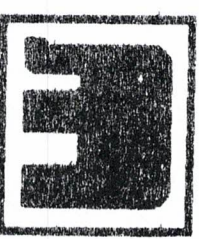
- LAUNDRY FACILITIES IN BUILDING
- PARKING AVAILABLE
- WIRED FOR HIGH SPEED INTERNET AND CABLE
- GAMES ROOM AND FENCED PLAYGROUND

**WEST PARK TOWER**

1760 MAIN STREET WEST

UNIT # 4 (E. & O. E.)

APPROX. 660 SQ. F.



THE EFFORT TRUST  
COMPANY



Steelesville