

ADDRESS OF CONDOMINIUM CORPORATION:
LA CAILLE SIXTH AVENUE INC.
603-888, 4th AVENUE S.W.
CALGARY, ALBERTA
T2P 0V2

NOTE
FOR ANY ENDORSEMENT, REGISTRATION MEMORANDUM, NOTIFICATION OR OTHER ENTRY THAT IS TO BE MADE ON THE PLAN, PLEASE SEE THE CONDOMINIUM ADDITIONAL SHEET (CS) WHICH IS ADDED TO THIS PLAN PURSUANT TO THE CONDOMINIUM PROPERTY REGULATION.

REGISTRAR
LAND TITLES OFFICE
PLAN NO. 171 0503
ENTERED AND REGISTERED
ON February 23, 2017
INSTRUMENT NO. 171 047 972
Keith Stang
A.D. REGISTRAR

UNIT NUMBERS	UNIT FACTORS	APPROXIMATE UNIT AREAS (m ²)
1	1	15.3
2	1	15.3
3	1	15.3
4	1	15.3
5	1	15.4
6	1	14.6
7	1	15.4
8	1	15.4
9	1	15.4
10	1	15.1
11	1	15.1
12	1	18.1
13	1	18.1
14	1	15.1
15	1	15.1
16	1	21.8
17	1	14.7
18	1	14.7
19	1	17.9
20	1	18.1
21	1	15.1
22	1	15.1
23	1	15.3
24	1	15.3
25	1	15.4
26	1	14.0
27	1	15.4
28	1	15.4
29	1	15.4
30	1	15.1
31	1	15.1
32	1	18.1
33	1	18.1
34	1	15.8
35	1	15.8
36	1	21.8
37	1	21.8
38	1	15.1
39	1	15.1
40	1	18.1
41	1	18.1
42	1	15.1
43	1	15.1
44	1	15.3
45	1	15.3
46	1	15.5
47	1	14.0
48	1	15.5
49	1	15.2
50	1	15.2
51	1	15.1
52	1	15.1
53	1	18.1
54	1	18.1
55	1	15.1
56	1	15.1
57	1	21.8
58	1	21.8
59	1	15.8
60	1	15.8
61	1	17.9
62	1	18.1
63	1	15.1
64	1	15.1
65	1	15.2
66	1	15.5
67	1	14.8
68	1	15.1
69	1	15.1
70	1	15.1
71	1	15.5
72	1	14.9
73	1	14.9
74	1	18.3
75	1	18.2
76	1	15.8
77	1	15.8
78	1	21.6
79	1	21.8
80	1	15.1
81	1	15.1
82	1	18.1
83	1	18.1
84	1	15.1
85	1	15.1
86	1	15.4
87	1	15.4
88	1	15.4
89	1	14.0
90	1	15.4
91	1	15.3
92	1	15.3
93	1	15.1
94	1	15.1
95	1	18.1
96	1	18.1
97	1	15.1
98	1	15.1
99	1	21.8
100	1	21.8
101	1	15.8
102	1	15.8
103	1	17.9
104	1	18.1
105	1	15.1
106	1	15.1
107	1	15.3

UNIT NUMBERS	UNIT FACTORS	APPROXIMATE UNIT AREAS (m ²)
108	1	15.3
109	1	15.4
110	1	14.0
111	1	15.4
112	1	15.4
113	1	15.4
114	1	15.1
115	1	15.1
116	1	18.1
117	1	18.1
118	1	15.8
119	1	15.8
120	1	21.6
121	1	21.8
122	1	15.1
123	1	15.1
124	1	17.8
125	1	18.2
126	1	15.2
127	1	14.8
128	1	15.6
129	1	15.1
130	1	15.8
131	1	14.0
132	1	15.1
133	1	15.8
134	1	14.9
135	1	15.6
136	1	14.6
137	1	18.8
138	1	17.4
139	1	15.1
140	1	15.1
141	1	21.8
142	1	21.6
143	1	15.8
144	1	15.8
145	1	17.9
146	1	18.1
147	1	15.1
148	1	15.1
149	1	15.3
150	1	15.3
151	1	14.0
152	1	14.0
153	1	15.4
154	1	15.4
155	1	15.4
156	1	15.1
157	1	15.1
158	1	18.1
159	1	18.1
160	1	15.8
161	1	15.8
162	1	21.6
163	1	21.8
164	1	15.1
165	1	15.1
166	1	18.0
167	1	18.0
168	1	15.1
169	1	15.1
170	1	15.3
171	1	15.3
172	1	15.4
173	1	14.0
174	1	15.4
175	1	15.4
176	1	15.4
177	1	15.1
178	1	15.1
179	1	18.0
180	1	18.0
181	1	15.1
182	1	15.1
183	1	21.8
184	1	21.8
185	1	15.7
186	1	15.7
187	1	17.9
188	1	18.1
189	1	15.1
190	1	15.1
191	1	15.3
192	1	15.3
193	1	15.4
194	1	14.0
195	1	15.4
196	1	15.4
197	1	15.4
198	1	15.1
199	1	15.1
200	1	18.1
201	1	18.1
202	1	15.7
203	1	15.7
204	1	21.8
205	1	21.8
206	1	15.1
207	1	15.1
208	1	17.4
209	1	17.4
210	1	15.2
211	1	15.4
212	1	15.4
213	1	14.0
214	1	15.4

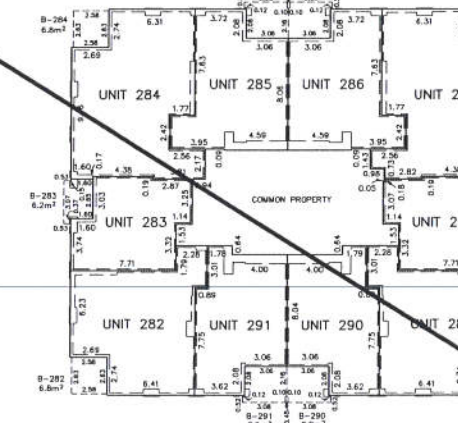
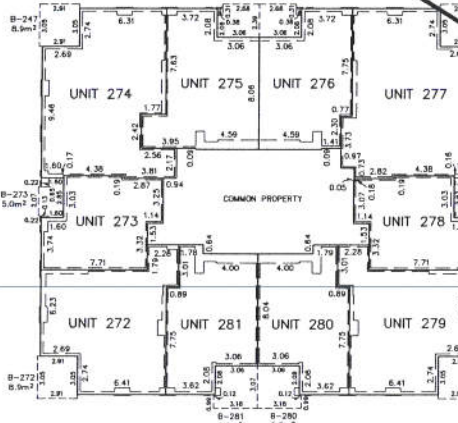
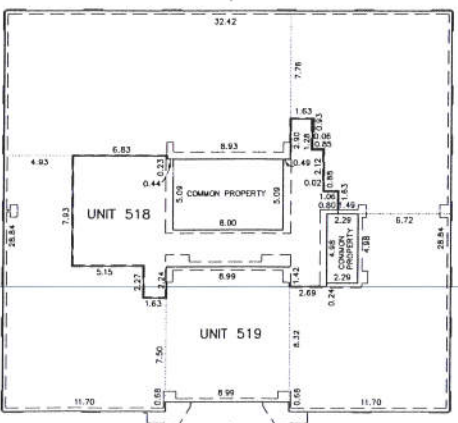
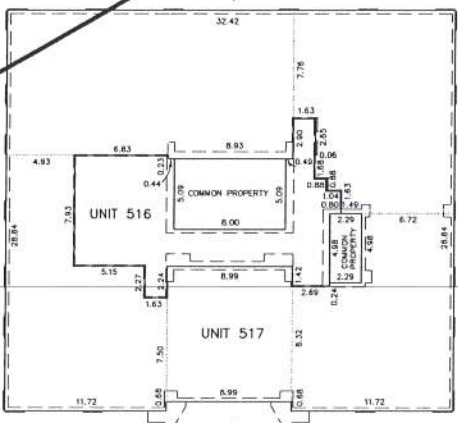
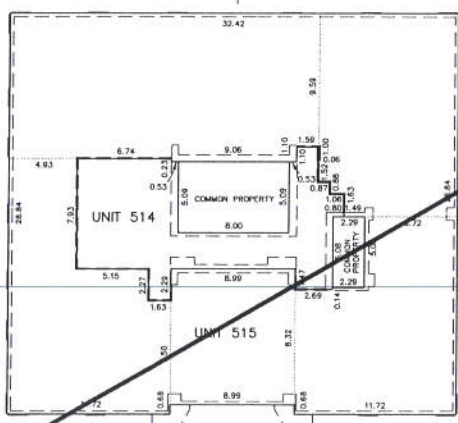
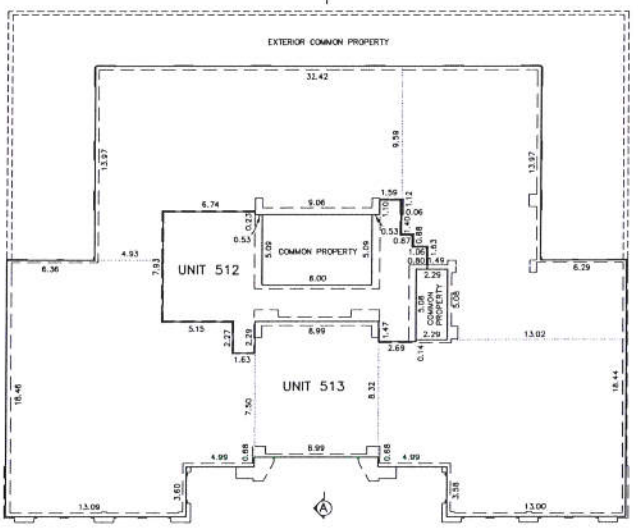
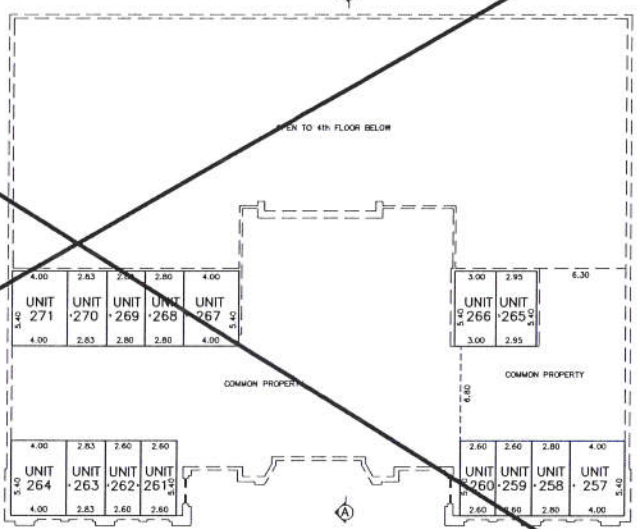
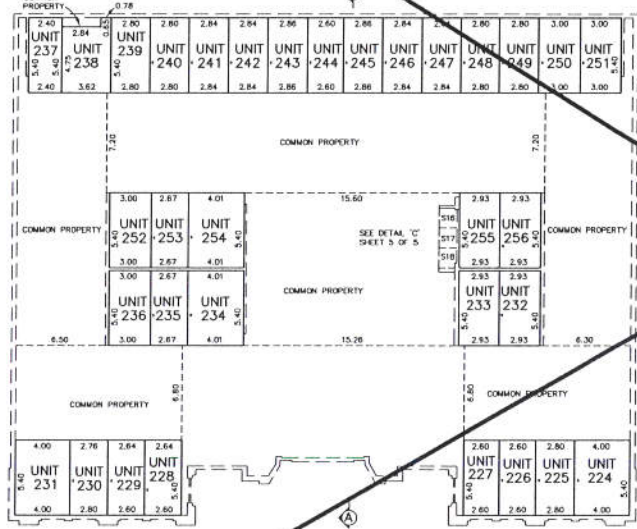
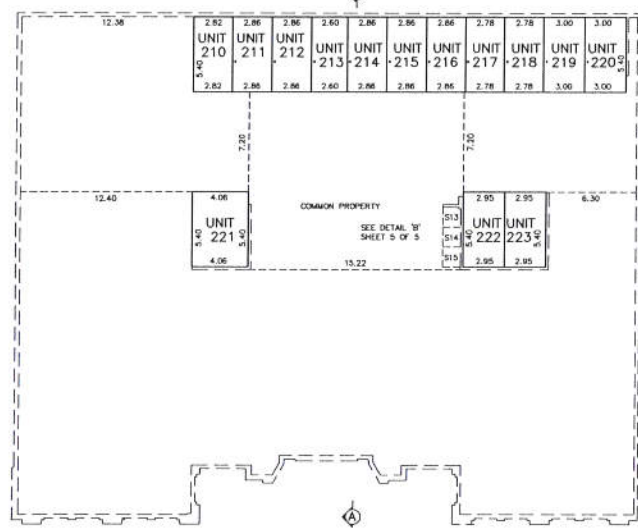
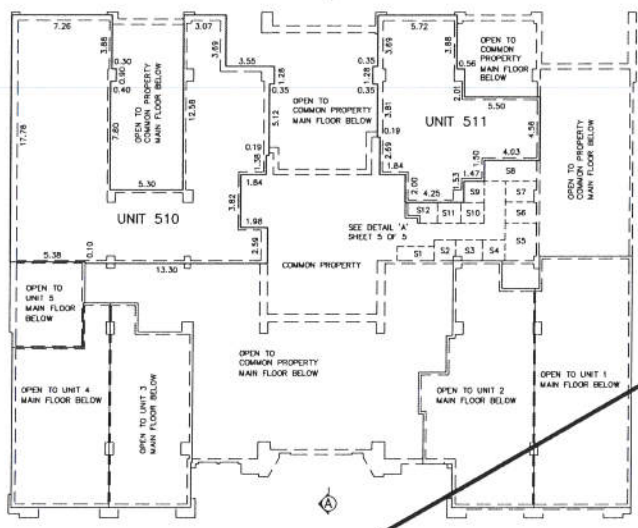
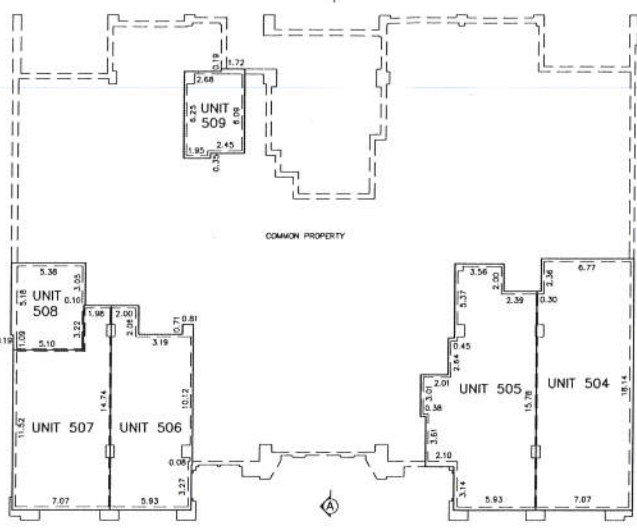
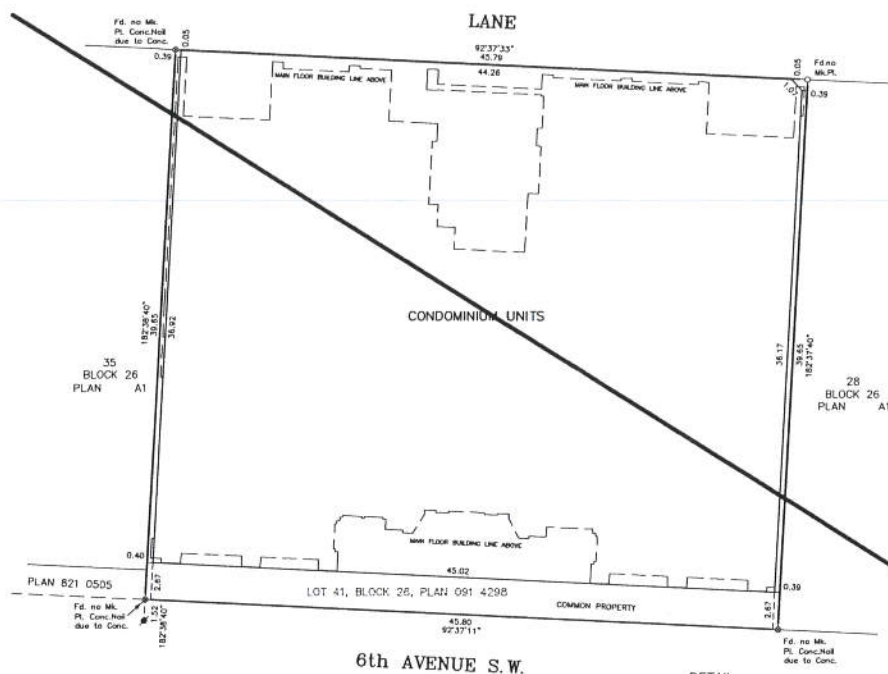
UNIT NUMBERS	UNIT FACTORS	APPROXIMATE UNIT AREAS (m ²)
215	1	15.4
216	1	15.4
217	1	15.0
218	1	15.0
219	1	16.2
220	1	16.2
221	1	21.9
222	1	15.9
223	1	15.9
224	1	21.6
225	1	15.1
226	1	14.0
227	1	14.0
228	1	14.2
229	1	14.2
230	1	14.9
231	1	21.6
232	1	15.8
233	1	15.8
234	1	21.6
235	1	14.4
236	1	16.2
237	1	13.0
238	1	17.7
239	1	16.1
240	1	15.1
241	1	15.3
242	1	15.3
243	1	15.4
244	1	14.0
245	1	15.4
246	1	15.3
247	1	15.3
248	1	15.1
249	1	15.1
250	1	16.2
251	1	16.2
252	1	16.2
253	1	14.4
254	1	21.6
255	1	15.8
256	1	15.8
257	1	21.6
258	1	15.1
259	1	14.0
260	1	14.0
261	1	14.0
262	1	14.0
263	1	15.3
264	1	21.6
265	1	15.9
266	1	16.2
267	1	21.6
268	1	15.1
269	1	15.1
270	1	15.3
271	1	21.6
272	37	79.3
273	23	50.7
274	46	99.1
275	31	66.4
276	28	60.4
277	49	104.4
278	23	50.6
279	37	79.3
280	28	60.2
281	28	60.2
282	37	79.3
283	23	50.7
284	46	99.1
285	31	66.4
286	31	66.4
287	46	98.4
288	23	50.6
289	37	79.3
290	28	60.2
291	28	60.2
292	37	79.3
293	23	50.7
294	46	99.1
295	31	66.4
296	31	66.4
297	46	98.4
298	23	50.6
299	37	79.3
300	28	60.2
301	28	60.2
302	37	79.3
303	23	50.7
304	46	99.1
305	31	66.4
306	31	66.4
307	46	98.4
308	23	50.6
309	37	79.3
310	28	60.2
311	28	60.2
312	37	79.3
313	23	50.7
314	46	99.1
315	31	66.4
316	31	66.4
317	46	98.4
318	23	50.6
319	37	79.3
320	28	60.2
321	28	60.2

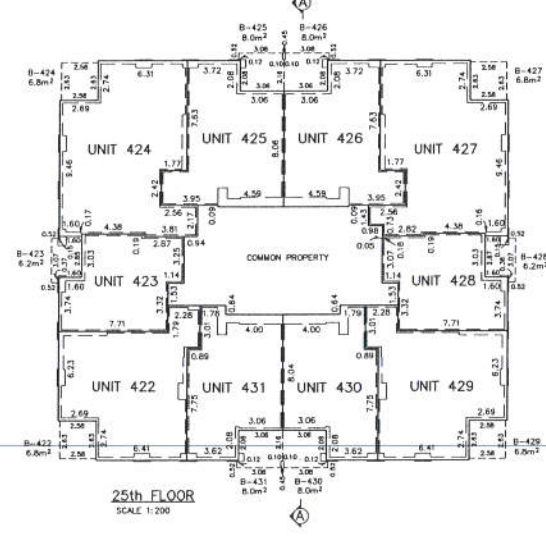
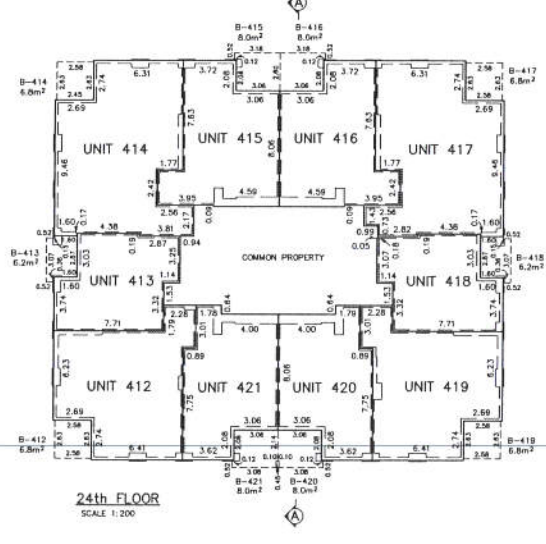
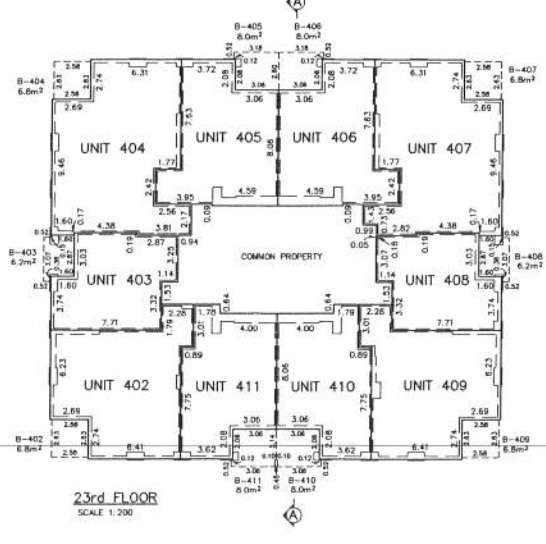
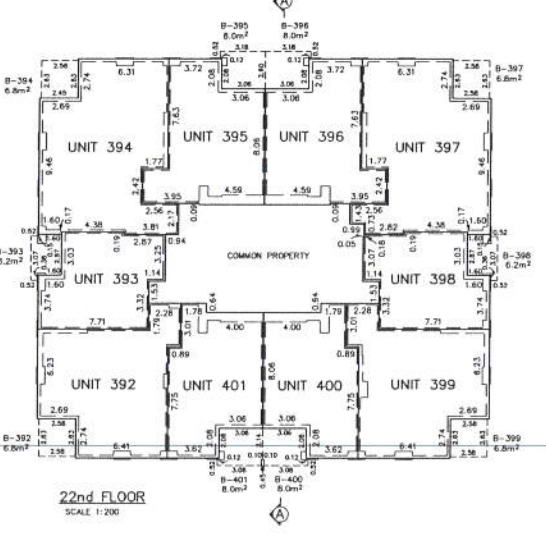
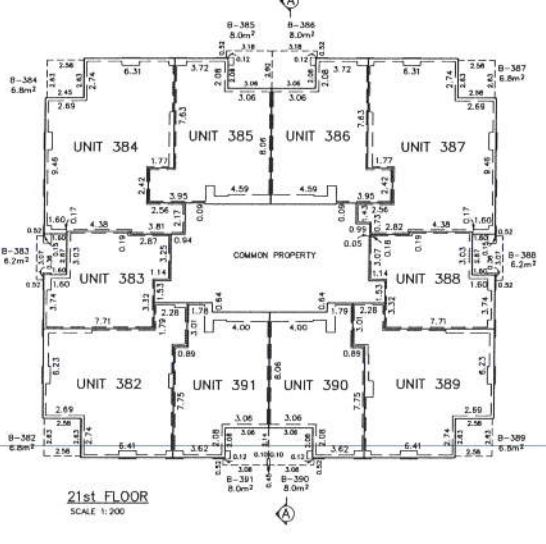
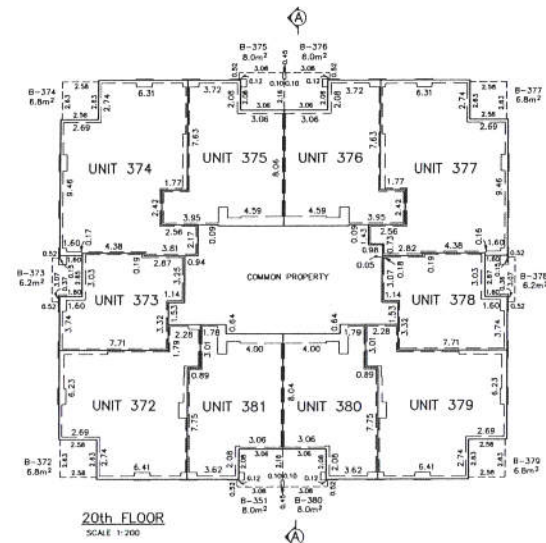
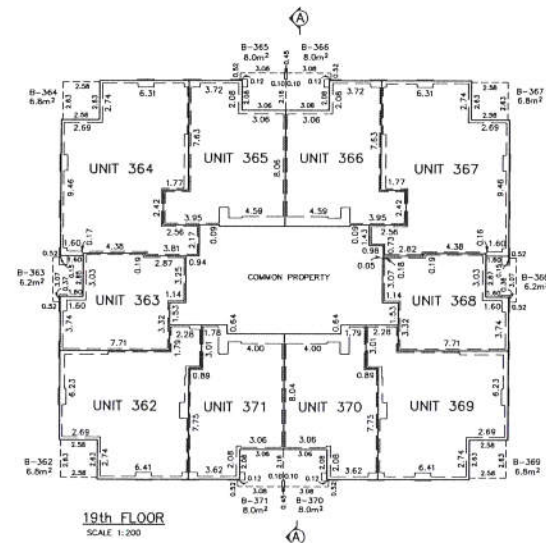
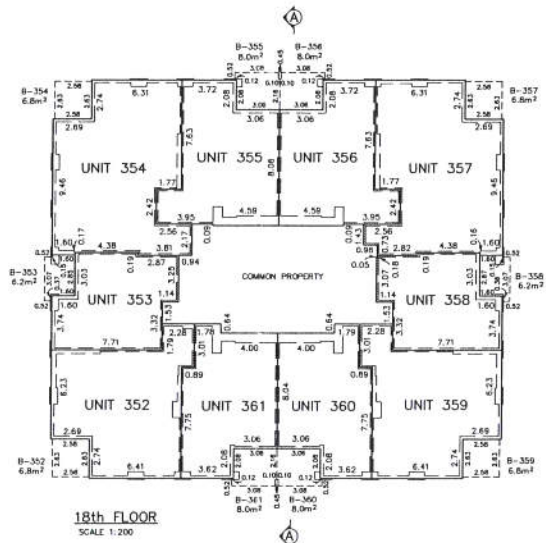
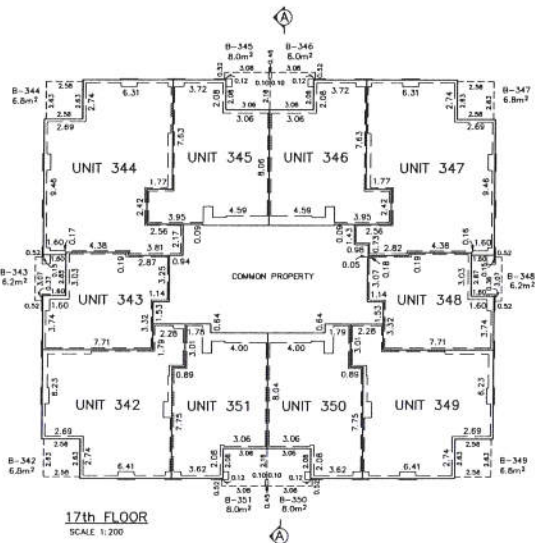
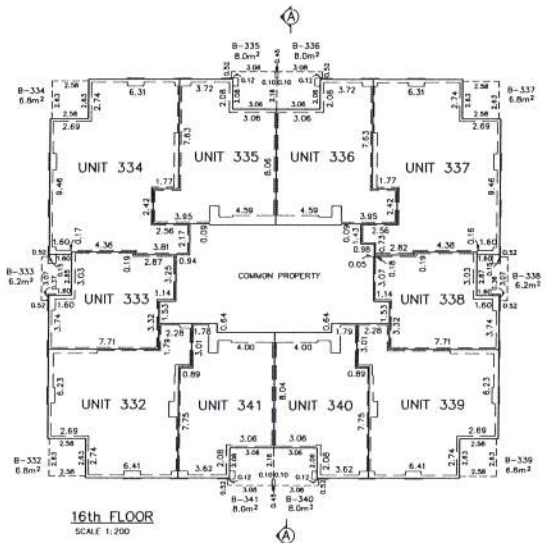
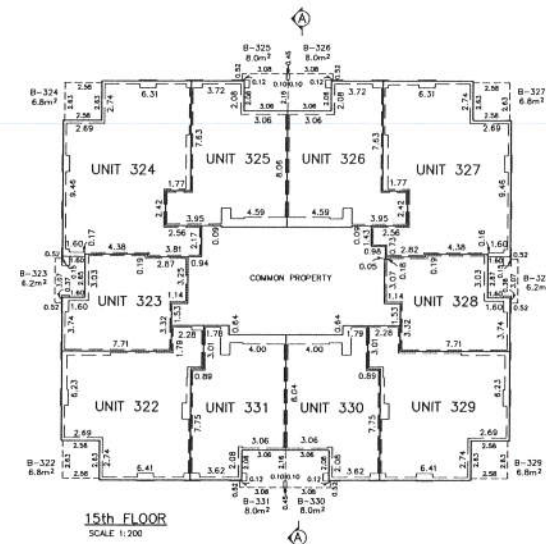
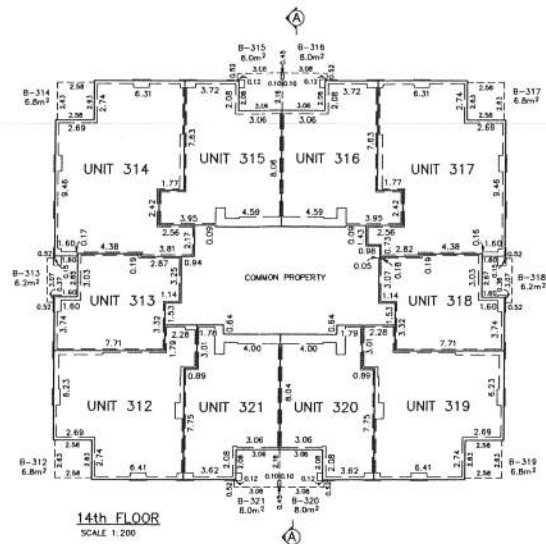
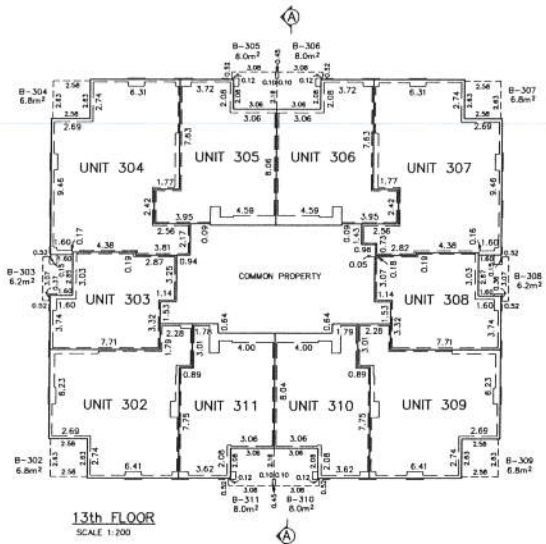
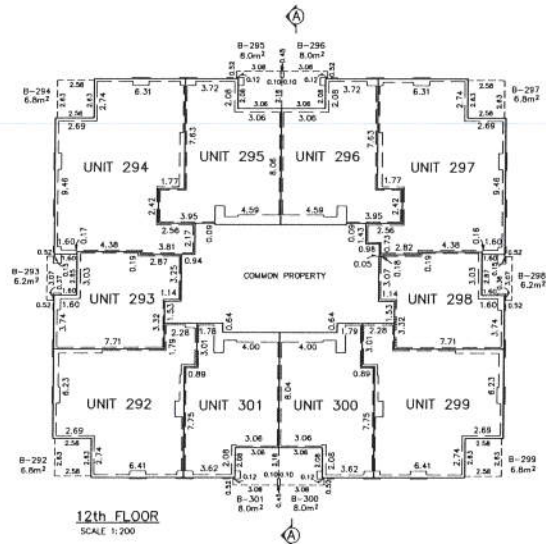
UNIT NUMBERS	UNIT FACTORS	APPROXIMATE UNIT AREAS (m ²)
322	37	79.3
323	23	50.7
324	46	99.1
325	31	66.4
326	31	66.4
327	46	98.4
328	23	50.6
329	37	79.3
330	28	60.2
331	28	60.2
332	37	79.3
333	23	50.7
334	46	99.1
335	31	66.4
336	31	66.4
337	46	98.4
338	23	50.6
339	37	79.3
340	28	60.2
341	28	60.2
342	37	79.3
343	23	50.7
344	46	99.1
345	31	66.4
346	31	66.4
347	46	98.4
348	23	50.6
349	37	79.3
350	28	60.2
351	28	60.2
352	37	79.3
353	23	50.7
354	46	99.1
355	31	66.4
356	31	66.4
357	46	98.4
358	23	50.6
359	37	79.3
360	28	60.2
361	28	60.2
362	37	79.3
363	23	50.7
364	46	99.1
365	31	66.4
366	31	66.4
367	46	98.4
368	23	50.6
369	37	79.3
370	28	60.2
371	28	60.2
372	37	79.3
373	23	50.7
374	46	99.1
375	31	66.4
376	31	66.4
377	46	98.4
378	23	50.6
379	37	79.3
380	28	60.2
381	28	60.2
382	37	79.3
383	23	50.7
384	46	99.1
385	31	66.4
386	31	66.4
387	46	98.4
388	23	50.6
389	37	79.3
390	28	60.2
391	28	60.2

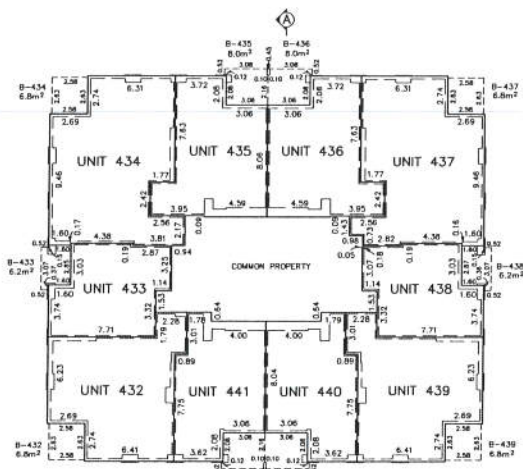
UNIT NUMBERS	UNIT FACTORS	APPROXIMATE UNIT AREAS (m ²)
392	37	79.3
393	23	50.7
394	46	99.1
395	31	66.4
396	31	66.4
397	46	98.4
398	23	50.6
399	37	79.3
400	28	60.2
401	28	60.2
402	37	79.3
403	23	50.7
404	46	99.1
405	31	66.4
406	31	66.4
407	46	98.4
408	23	50.6
409	37	79.3
410	28	60.2
411	28	60.2
412	37	79.3
413	23	50.7
414	46	99.1
415	31	66.4
416	31	66.4
417	46	98.4
418	23	50.6
419	37	79.3
420	28	60.2
421	28	60.2
422	37	79.3
423	23	50.7
424	46	99.1
425	31	66.4
426	31	66.4
427	46	98

SHEET 2 OF 8 REPLACED BY SHEET 7 OF 8 BY JUDGE'S ORDER REGISTERED AS INSTRUMENT NUMBER 191 178 226

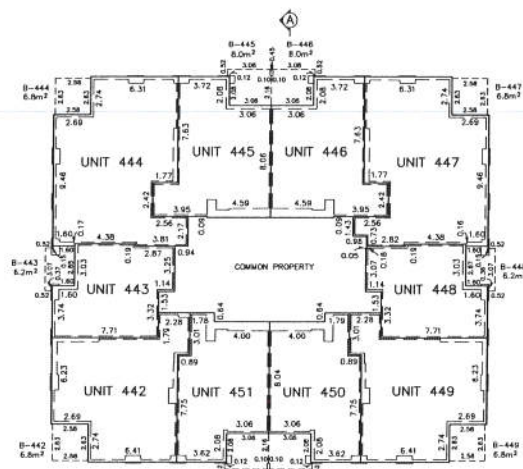
REGISTRAR
LAND TITLES OFFICE
PLAN NO. 171 0503
ENTERED AND REGISTERED
ON February 23, 2017
INSTRUMENT NO. 171 047 972
Keith Stang
A.D. REGISTRAR



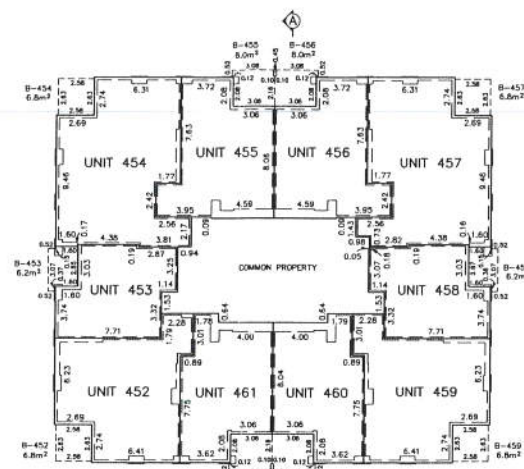




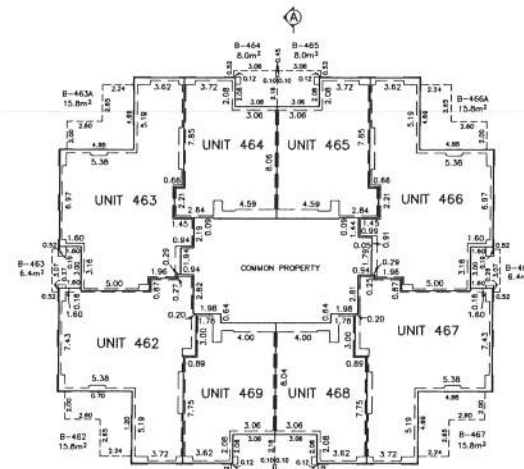
26th FLOOR
SCALE 1:200



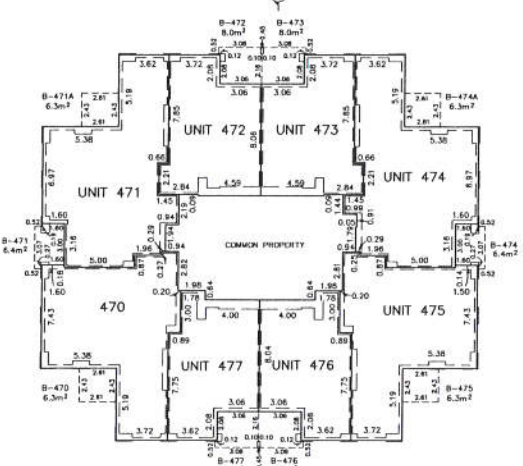
27th FLOOR
SCALE 1:200



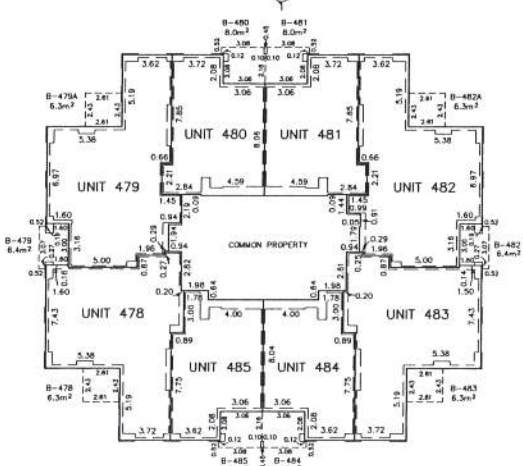
28th FLOOR
SCALE 1:200



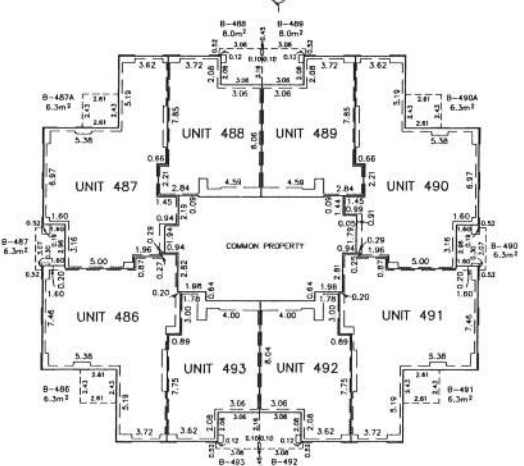
29th FLOOR
SCALE 1:200



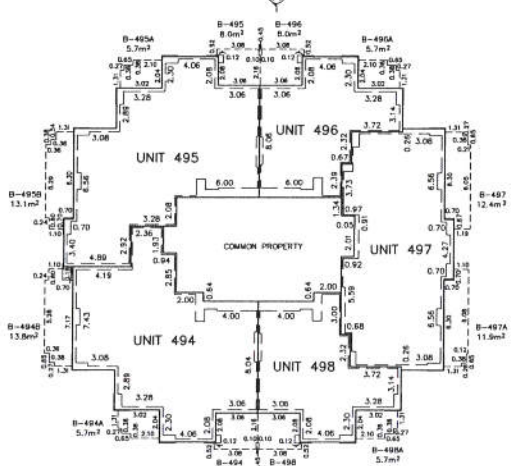
30th FLOOR
SCALE 1:200



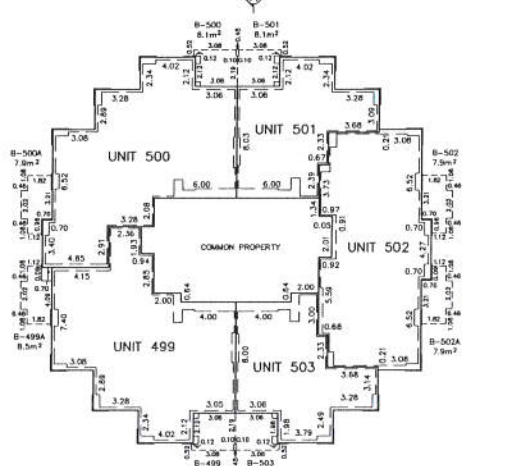
31st FLOOR
SCALE 1:200



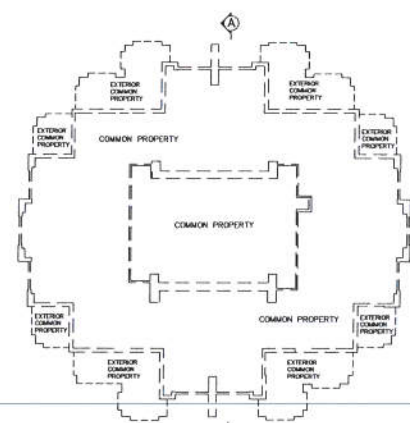
32nd FLOOR
SCALE 1:200



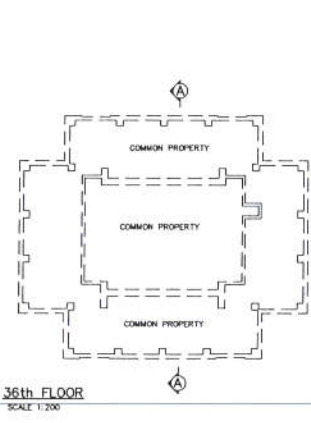
33rd FLOOR
SCALE 1:200



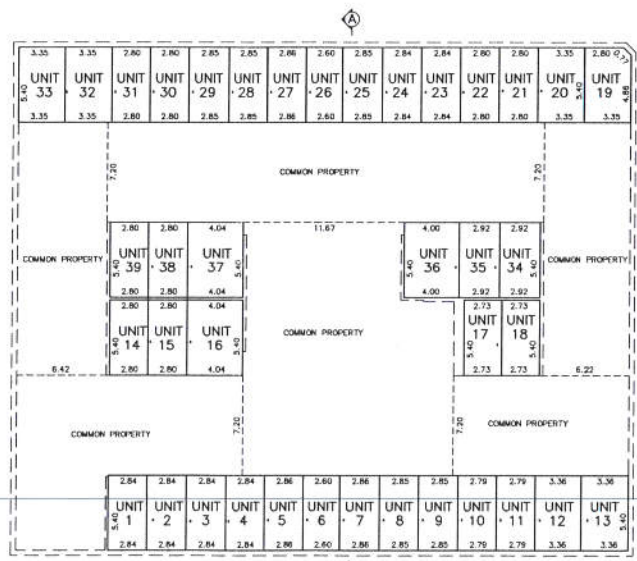
34th FLOOR
SCALE 1:200



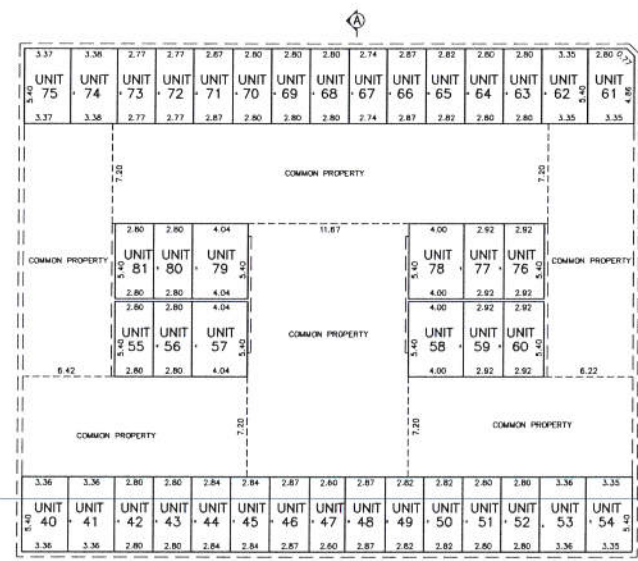
35th FLOOR
SCALE 1:200



36th FLOOR
SCALE 1:200



PARKADE LEVEL 1
SCALE 1:200

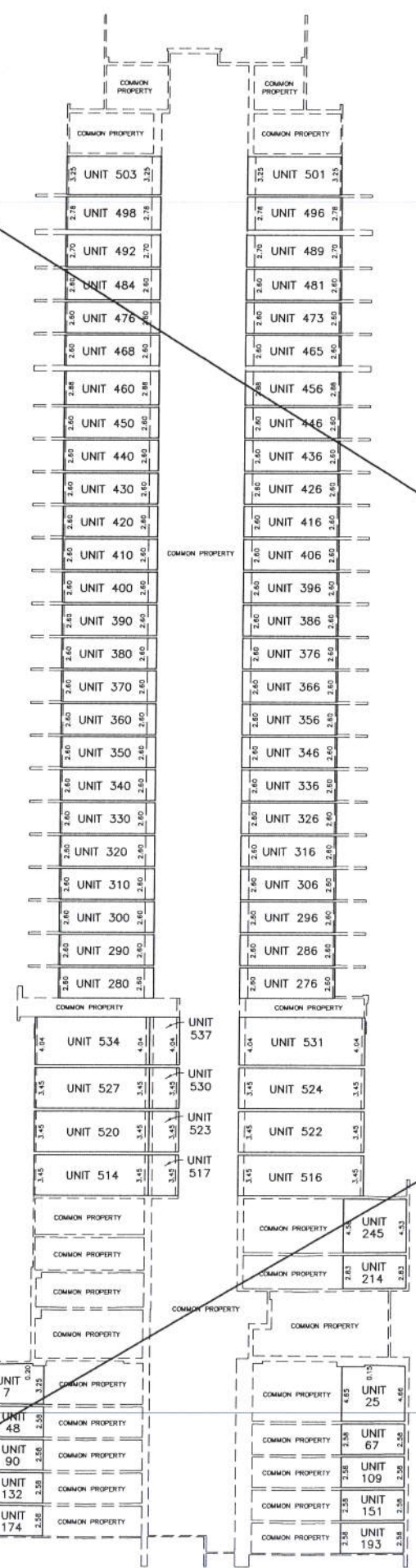


PARKADE LEVEL 2
SCALE 1:200



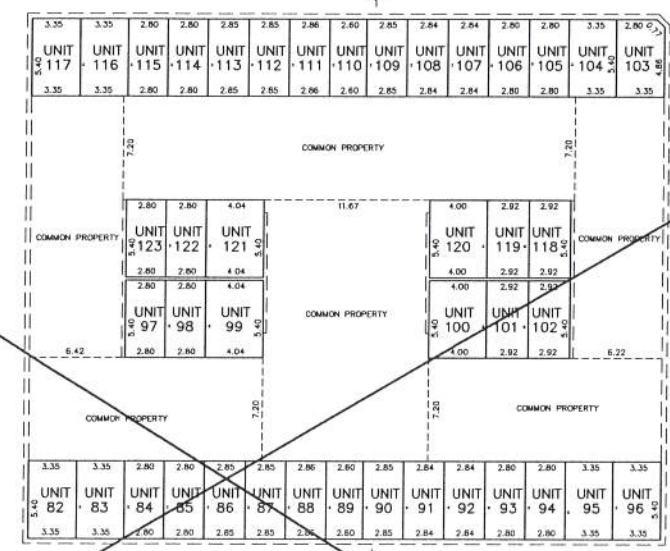
SHEET 5 OF 8 REPLACED BY SHEET 8 OF 8 BY JUDGE'S ORDER REGISTERED AS INSTRUMENT NUMBER 191 178 226

36th FLOOR
35th FLOOR
34th FLOOR
33rd FLOOR
32nd FLOOR
31st FLOOR
30th FLOOR
29th FLOOR
28th FLOOR
27th FLOOR
26th FLOOR
25th FLOOR
24th FLOOR
23rd FLOOR
22nd FLOOR
21st FLOOR
20th FLOOR
19th FLOOR
18th FLOOR
17th FLOOR
16th FLOOR
15th FLOOR
14th FLOOR
13th FLOOR
12th FLOOR
11th FLOOR
10th FLOOR
9th FLOOR
8th FLOOR
7th FLOOR
6th FLOOR
5th FLOOR
4th FLOOR
3rd FLOOR
MAIN FLOOR
PARKADE LEVEL 1
PARKADE LEVEL 2
PARKADE LEVEL 3
PARKADE LEVEL 4
PARKADE LEVEL 5

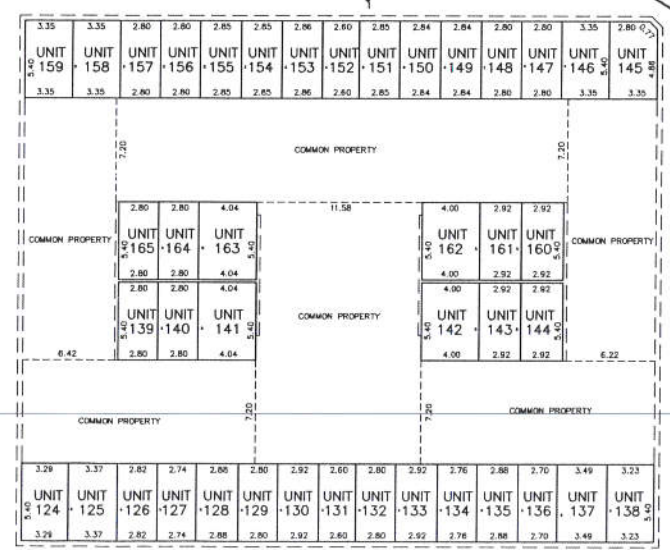


CROSS SECTION A-A
SCALE 1:200

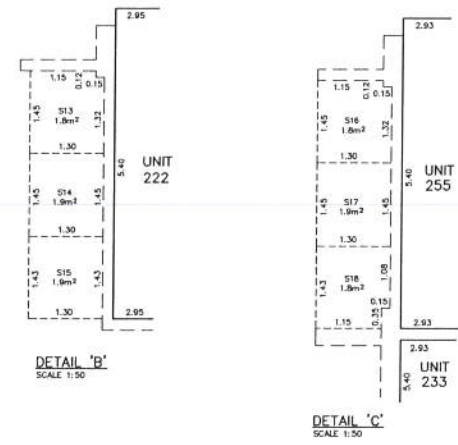
6th FLOOR
4th FLOOR
3rd FLOOR
2nd FLOOR
MAIN FLOOR
PARKADE LEVEL 1
PARKADE LEVEL 2
PARKADE LEVEL 3
PARKADE LEVEL 4
PARKADE LEVEL 5



PARKADE LEVEL 3
SCALE 1:200

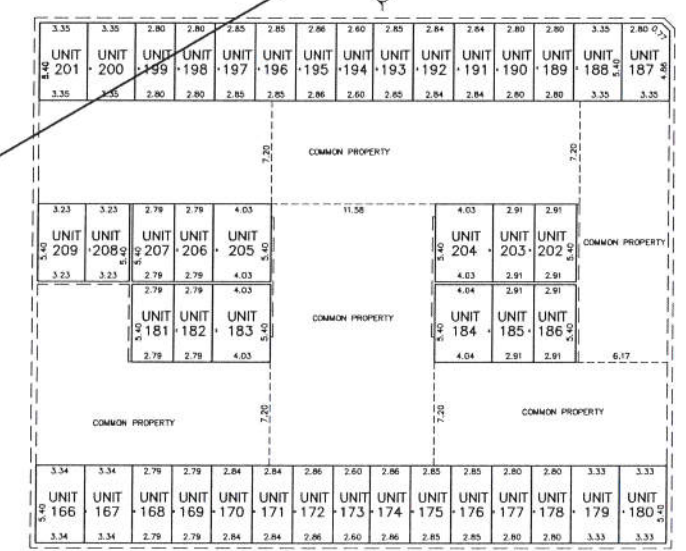


PARKADE LEVEL 4
SCALE 1:200

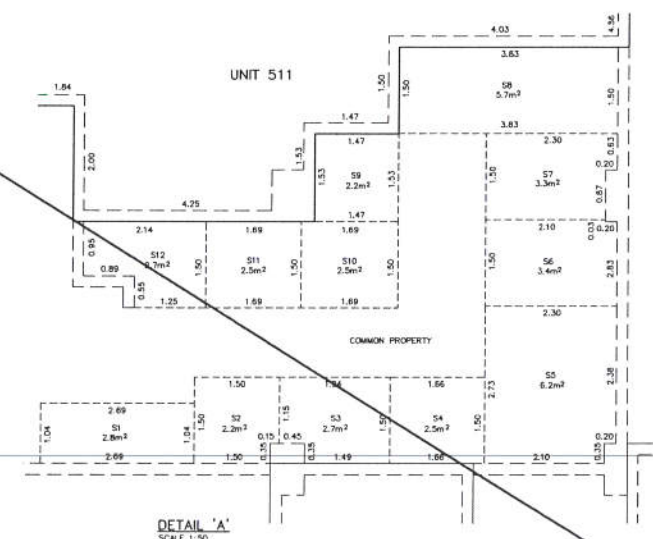


DETAIL 'B'
SCALE 1:50

DETAIL 'C'
SCALE 1:50



PARKADE LEVEL 5
SCALE 1:200



DETAIL 'A'
SCALE 1:50



ADDRESS OF CONDOMINIUM CORPORATION:

LA CAILLE SIXTH AVENUE INC.
603-888, 4th AVENUE S.W.
CALGARY, ALBERTA
T2P 0V2

NOTE

FOR ANY ENDORSEMENT, REGISTRATION MEMORANDUM NOTIFICATION OR OTHER ENTRY THAT IS TO BE MADE ON THE PLAN, PLEASE SEE THE CONDOMINIUM ADDITIONAL SHEET (CS) WHICH HAS BEEN ADDED TO PLAN 171 0503 PURSUANT TO THE CONDOMINIUM PROPERTY REGULATION.

REGISTRAR
LAND TITLES OFFICE

SHEET 6 OF 8

PLAN NO. 171 0503

ENTERED AND REGISTERED

ON August 30, 2019

INSTRUMENT NO: 191 178 226

D. Shankie
A.S. REGISTRAR

Table with 3 columns: UNIT NUMBERS, UNIT FACTORS, APPROXIMATE UNIT AREAS (m²). Units 1-107.

Table with 3 columns: UNIT NUMBERS, UNIT FACTORS, APPROXIMATE UNIT AREAS (m²). Units 108-204.

Table with 3 columns: UNIT NUMBERS, UNIT FACTORS, APPROXIMATE UNIT AREAS (m²). Units 205-301.

Table with 3 columns: UNIT NUMBERS, UNIT FACTORS, APPROXIMATE UNIT AREAS (m²). Units 302-398.

Table with 3 columns: UNIT NUMBERS, UNIT FACTORS, APPROXIMATE UNIT AREAS (m²). Units 399-495.

Table with 3 columns: UNIT NUMBERS, UNIT FACTORS, APPROXIMATE UNIT AREAS (m²). Units 496-592.

Table with 3 columns: UNIT NUMBERS, UNIT FACTORS, APPROXIMATE UNIT AREAS (m²). Units 593-689.

THE ABOVE UNIT FACTORS HAVE BEEN APPORTIONED AND COMPUTED SUBSTANTIALLY ON THE BASIS OF THE SQUARE FOOTAGE OF EACH UNIT IN RELATION TO THE TOTAL OF ALL UNITS IN THE PROJECT, WITH THE EXCEPTION OF UNITS 508, 510, 512, 514 AND PARKING UNITS 1 TO 271 WHICH HAS BEEN ASSIGNED A UNIT FACTOR OF 1.

CITY OF CALGARY

CONDOMINIUM PLAN

OF Lot 41, Block 26, Plan 091 4298

WITHIN N.E.1/4 Sec.16, Twp.24, Rge.1, W. 5 M.

SCALE: 1:500

BY: AZIZ M. DHARAMSHI, A.L.S., 2019

LEGEND

Distances shown are in metres and decimals thereof. Stationary Iron Posts are shown thus: found, planted, marked, P 078. Area referred to by this plan is outlined thus: ...

All building location dimensions refer to external concrete foundation walls and are perpendicular to boundary lines. Areas and internal unit dimensions are an approximate indication of unit size as derived from Architectural plans, and confirmed by field measurements.

Unit numbers are shown thus: UNIT 1, UNIT 2 etc.

The boundary between floors and ceilings of units is as Section 9 (1) of the Condominium Property Act.

The boundary of Units 272 to 515 inclusive are:

- 1) to centre line of common wall shown thus;
2) to the outside face of the unit with common property and to the exterior face of studs excluding masonry finish shown thus;
3) The boundary of any unit with interior Common Property is the internal surface of the external finishing material of the interior common property wall shown thus;

The boundary of Units 1 to 271 are:

- 1) where no walls exist the boundary of a unit is governed by the vertical plane as defined by distances shown thus;
2) where walls exist as Section 9(1) of the Condominium Property Act shown thus;

Units 272 through 503 are Residential Units.

Units 1-271 are to be used for Parking purposes only. Units 504-507, 509, 511, 513, 515 are Commercial Units. Units 508, 510, 512, 514 are to be used for Common use only.

ABBREVIATIONS

S.W.-Southwest, N.E.-Northeast, Sec.-Section, Twp.-Township, Rge.-Range, W.-West, M.-Meridian, F.I.-Found Iron Post, F.no mk.-found no mark, est.pos.-established position, D.H.-Drill Hole, Conc.-Concrete, P.I.-Planted Iron Post, RP-Geo-Referenced Point.

DATUM: NAD 83
PROJECTION: 3° TRANSVERSE MERCATOR COORDINATES
REFERENCE MERIDIAN: 114°
COMBINED SCALE FACTOR: 0.999739

POST TENSION CABLE

This plan is accompanied by a certificate regarding post tensioned cables and signed by Aziz M. Dharamshi stating there are no post tensioned cables located anywhere on or within the building or the property on which the building is located.

SURVEYOR

NAME: AZIZ M. DHARAMSHI, A.L.S.
SURVEYED BETWEEN THE DATES OF NOVEMBER 29, 2011 AND NOVEMBER 09, 2016 IN ACCORDANCE WITH THE PROVISIONS OF THE SURVEYS ACT.

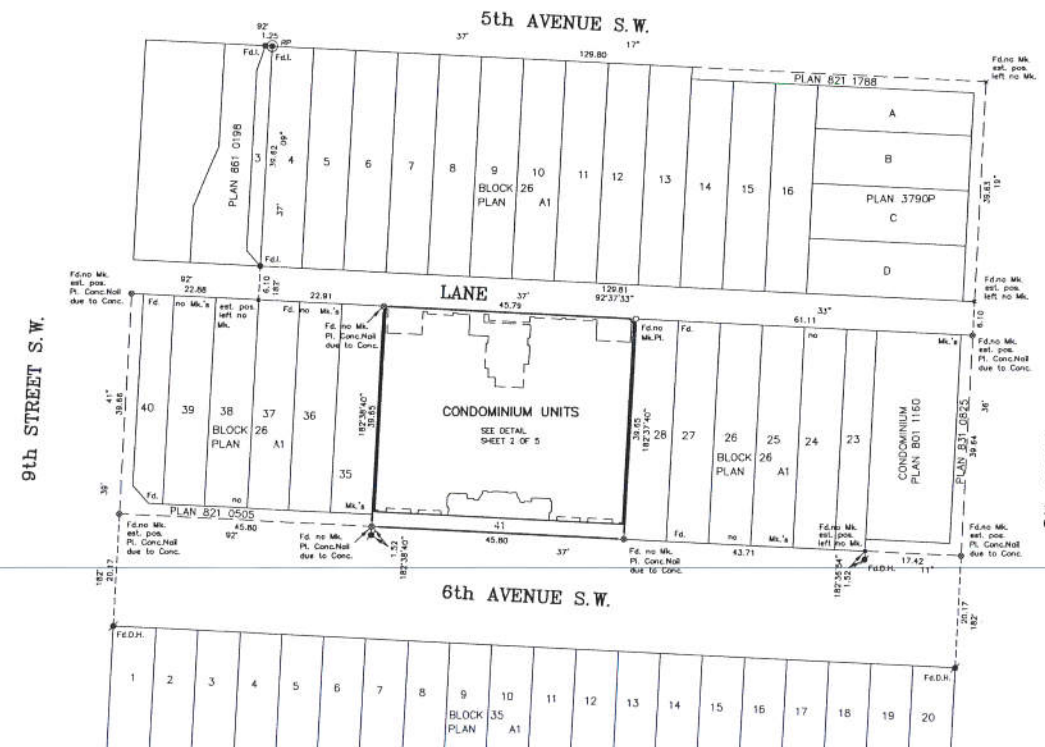


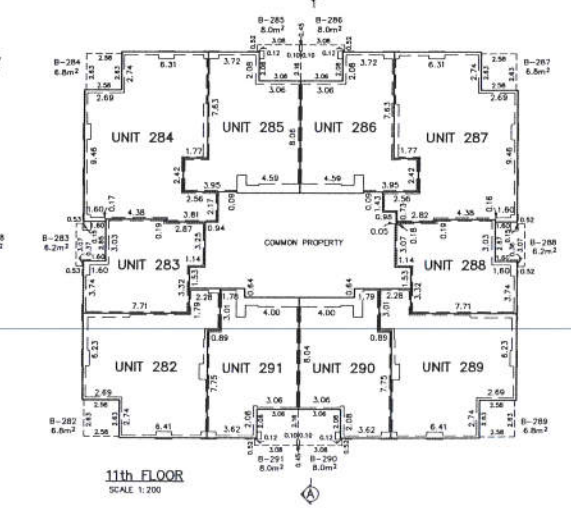
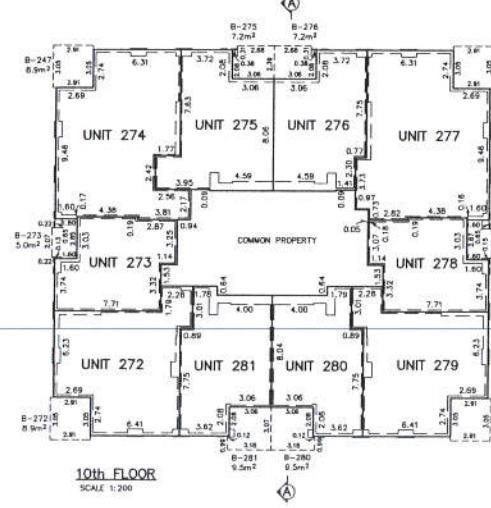
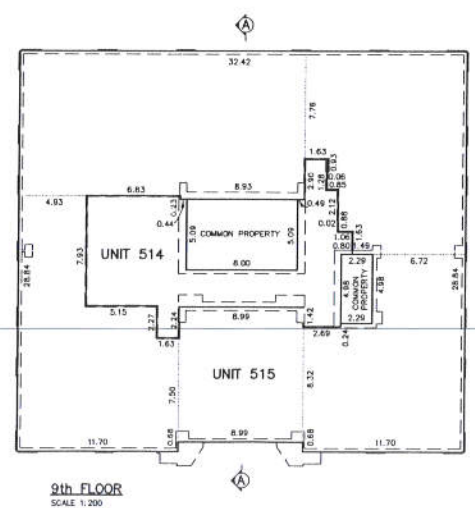
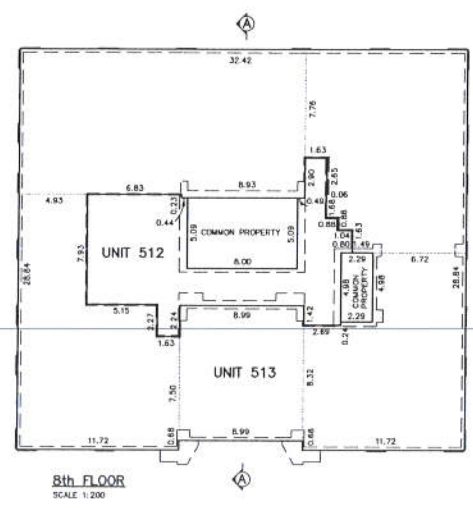
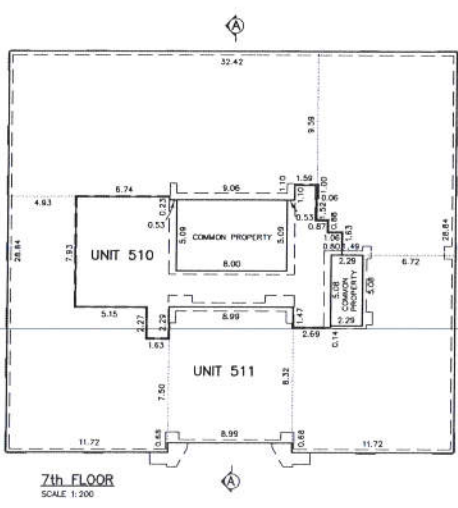
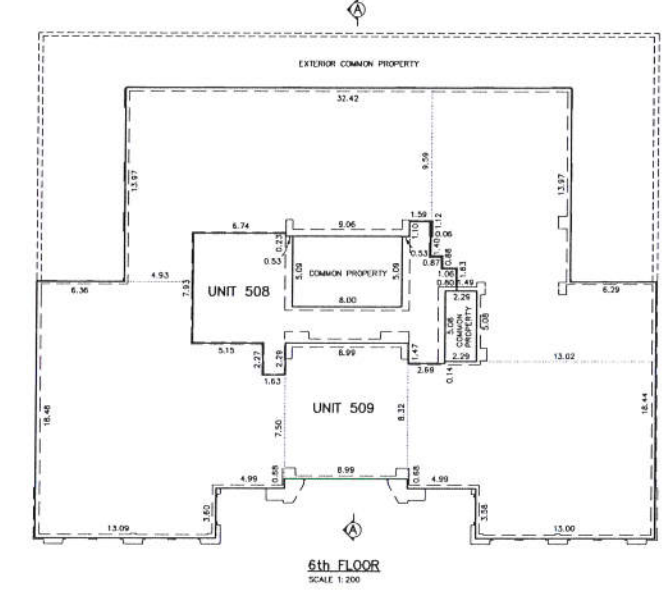
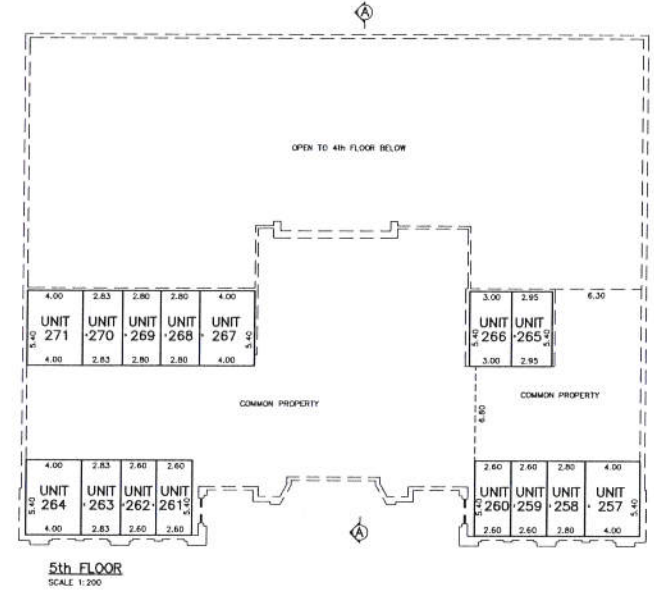
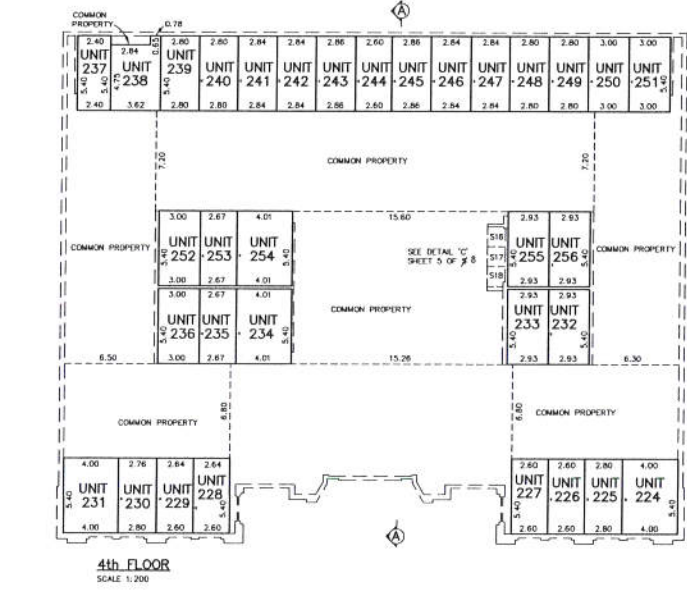
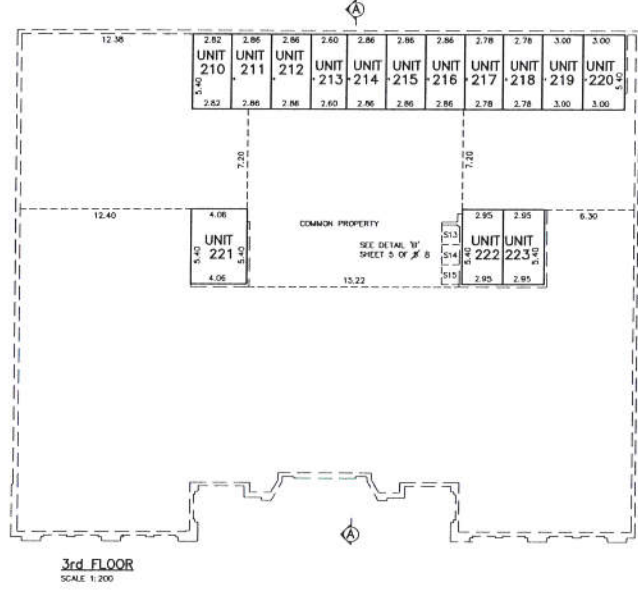
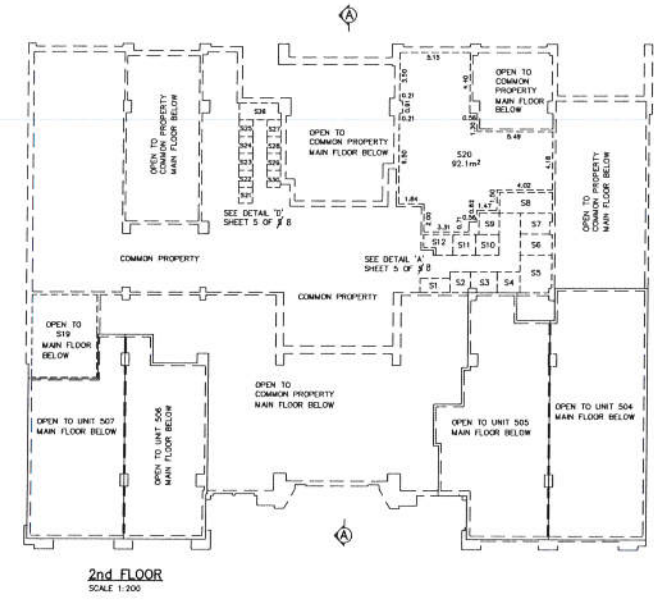
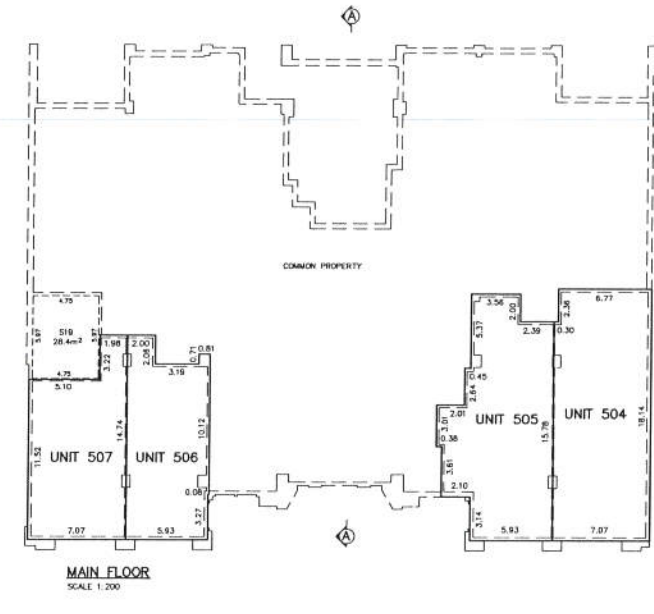
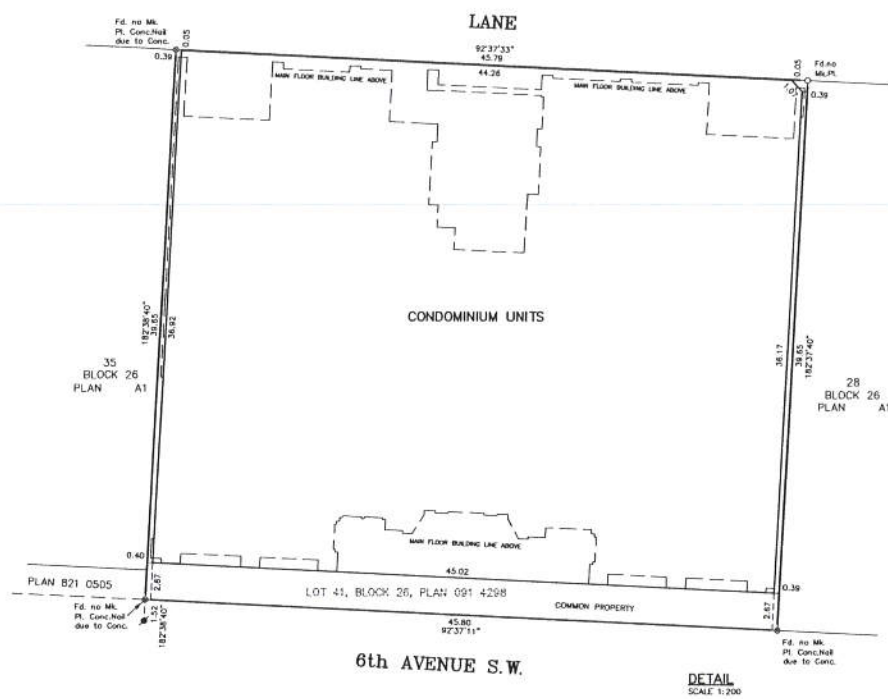
REGISTERED OWNERS

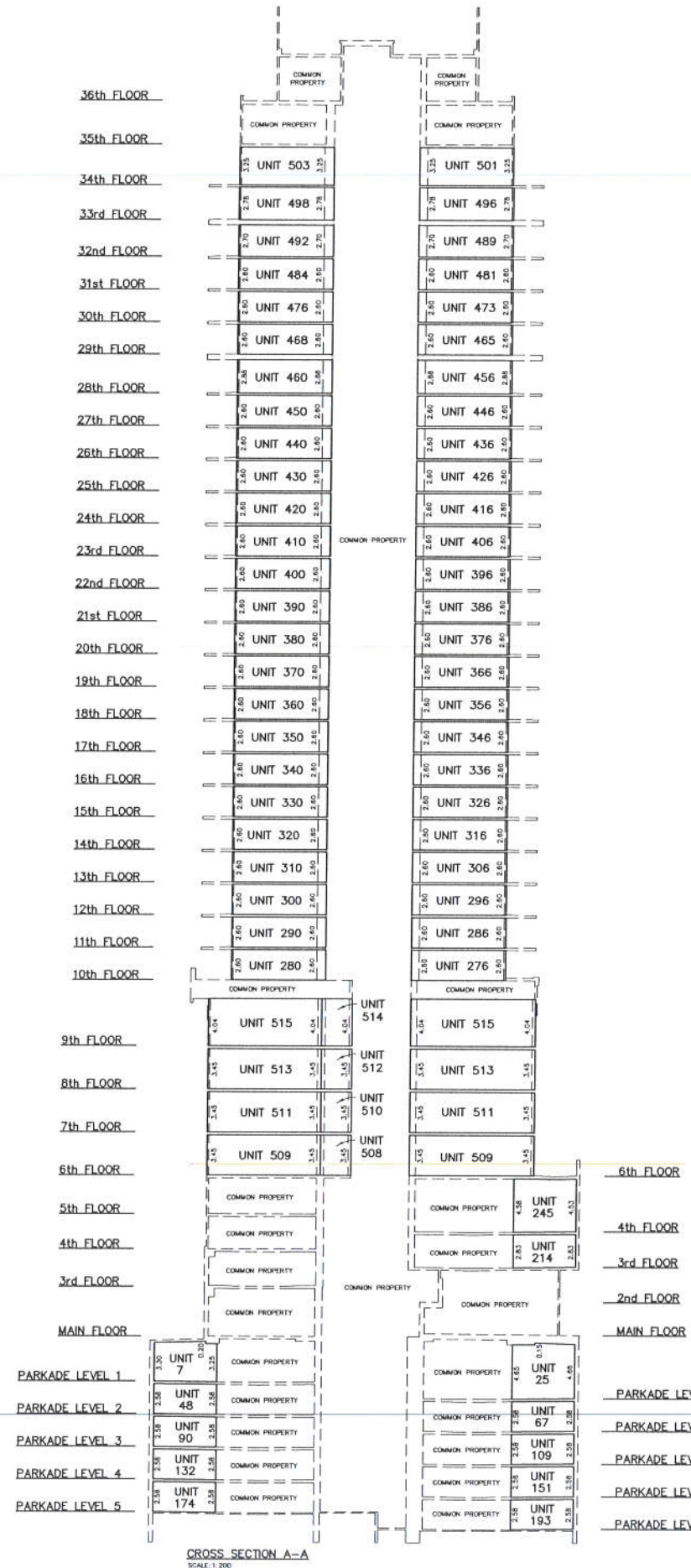
LA CAILLE SIXTH AVENUE INC.

APPROVING AUTHORITY

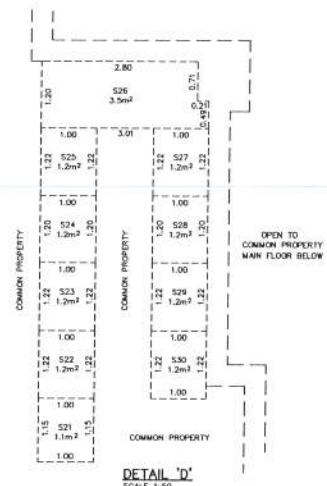
NAME: CITY OF CALGARY
FILE NO. CA2016-0129
DATE APPROVED: JANUARY 16, 2017



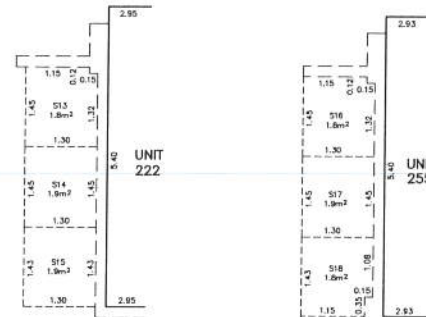




CROSS SECTION A-A
SCALE 1:200



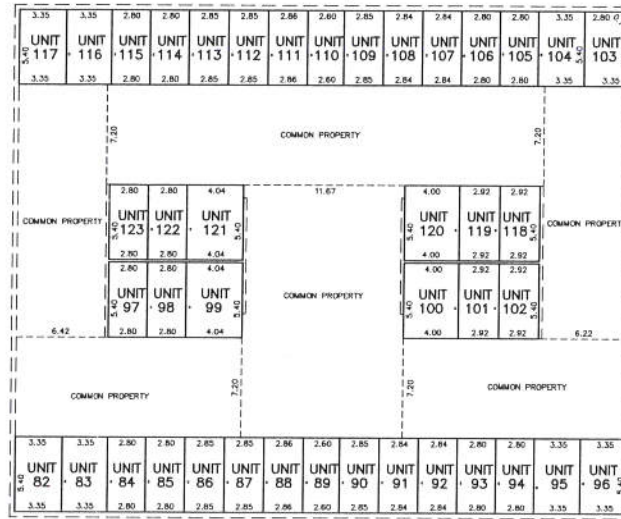
DETAIL 'D'
SCALE 1:50



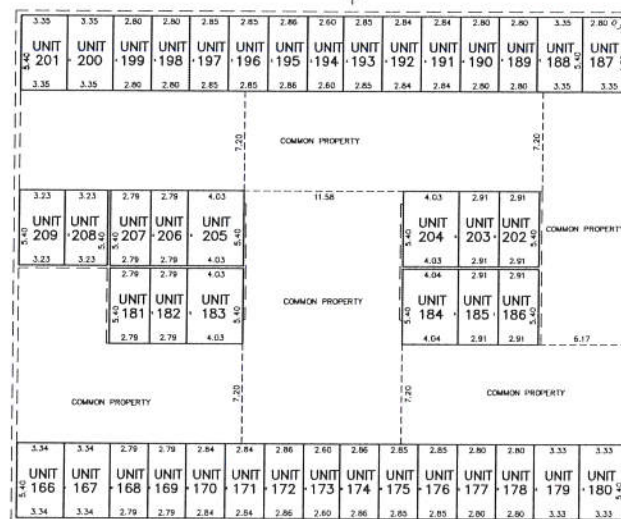
DETAIL 'B'
SCALE 1:50



DETAIL 'C'
SCALE 1:50



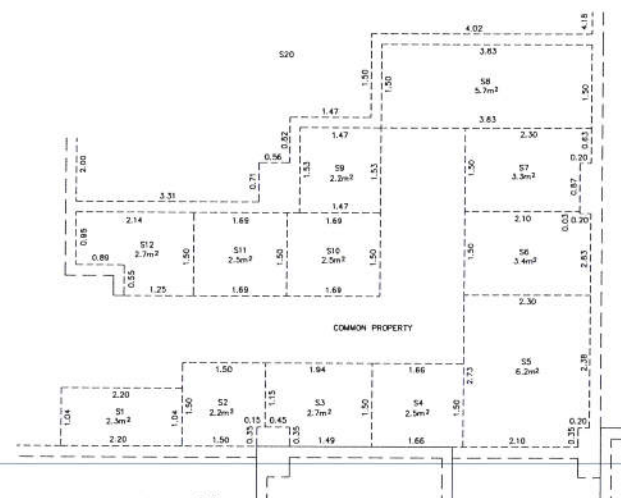
PARKADE LEVEL 3
SCALE 1:200



PARKADE LEVEL 5
SCALE 1:200



PARKADE LEVEL 4
SCALE 1:200



DETAIL 'A'
SCALE 1:50

