

# The Curry Building

212 Notre Dame Avenue  
@ Portage Avenue  
Winnipeg, Manitoba

RESTAURANT - RETAIL - OFFICE

1,893 SQ FT ±  
FOR LEASE



**ASH**

A.S.H. MANAGEMENT GROUP INC.  
BROKERAGE

January 2024

# Property Information

- This full city block landmark Property is located on the north side of Portage Avenue between Notre Dame Avenue and Garry Street in the heart of downtown, just two blocks from Canada Life Centre and across from the climate controlled underground concourse and skywalk system.
- Lower level storage available.
- Multiple transit stops.
- Surface parking and parkade parking available nearby.
- Numerous restaurants and cafes nearby.



**"Despite the numerous exterior changes, the Curry Building continues to be one of the most visually impressive structures on Portage Avenue."**

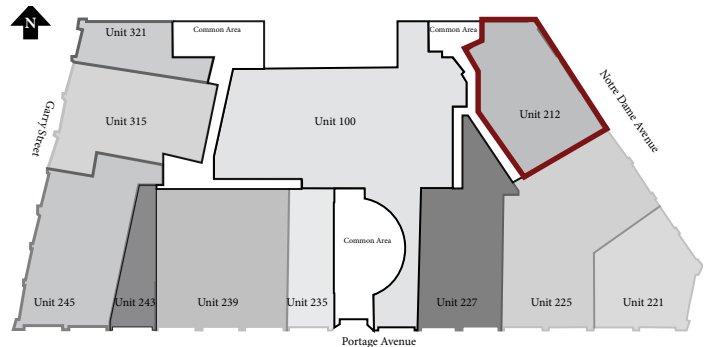
**Source: City of Winnipeg Historical Building Committee**



# Suite Information

**1,893 sf ±**

- Great Opportunity for New Ventures. Whether you're an established business or an aspiring entrepreneur, this highly visible space presents an excellent opportunity to launch or expand your business.
- Large eastern glazing.
- Exterior signage opportunity.
- Interior secondary suite access.
- On-site property management.
- Available immediately.



First Floor Site Plan

Base Rental Rate (psf per annum)	Additional Rent (psf per annum 2024 est.)
\$19.95	\$6.22 <sup>1,2</sup>

- <sup>1</sup> Plus hydro, gas and water utilities.
- <sup>2</sup> Plus 5% management fee on gross rent.



A.S.H. MANAGEMENT GROUP INC.  
BROKERAGE



# 212 Notre Dame Avenue 1,893 sf ±

## Floor Plan

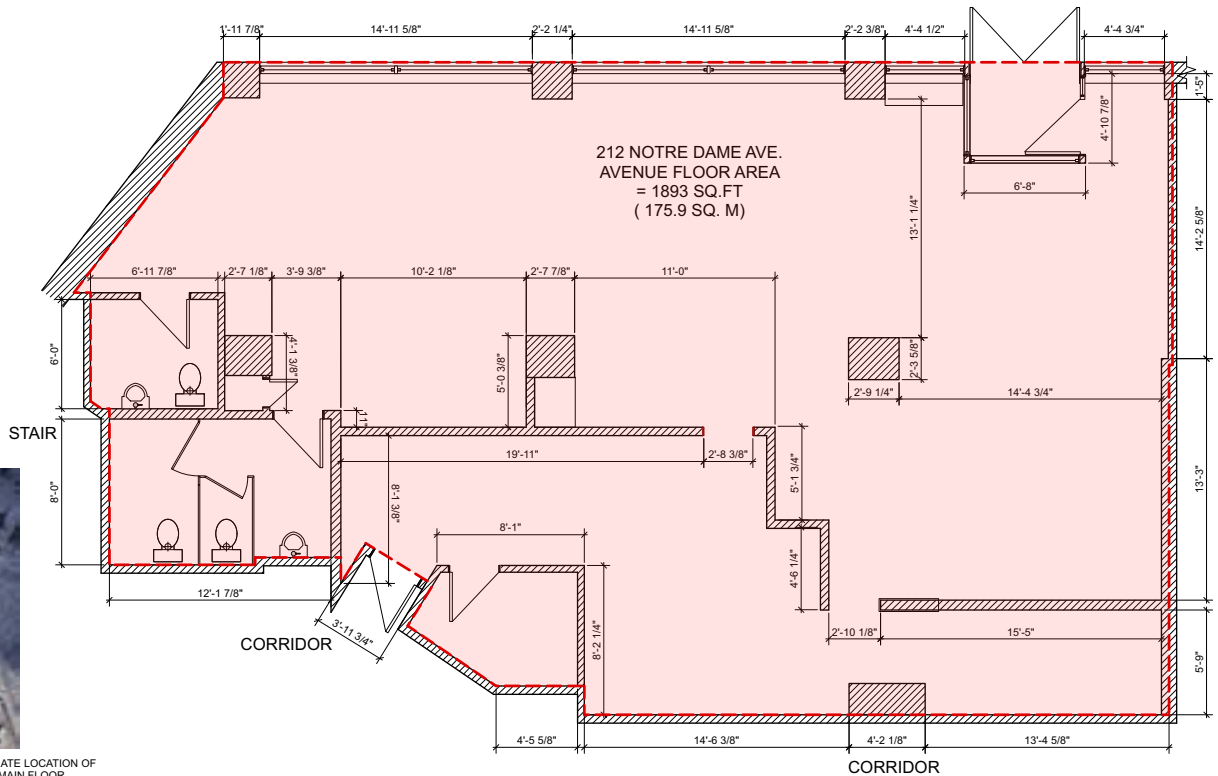
### GENERAL NOTES:

- ASSUMED DEMISING WALL THICKNESSES OF 5.5" AND 6.5" IN SOME LOCATIONS BASED ON SITE OBSERVATIONS.
- NO DESTRUCTIVE TESTING WAS COMPLETED TO VERIFY THESE DIMENSIONS.
- MEASUREMENTS TAKEN FROM ANSIBOMA Z65.1 STANDARD.
- AREA CALCULATIONS USE THE FOLLOWING:
  - CENTERLINE OF TENANT DEMISING WALLS.
  - STORE AREA (ONLY) WITH STREET LEVEL FRONTAGE IS MEASURED TO OUTER FACE OF BUILDING.
  - INSIDE FACE OF COMMON CORRIDOR WALLS.
  - INSIDE FACE OF WALLS WHERE WALL MATERIAL OR NON-GLASS MATERIAL COMPRISES MORE THAN 50% OF THE VERTICAL FLOOR-TO-CEILING DIMENSION.
  - FACE OF GLASS WHERE GLASS COMPRISES MORE THAN 50% OF THE VERTICAL FLOOR-TO-CEILING DIMENSION.
  - CENTERLINE OF VISIBLE COLUMNS SHARED BETWEEN WALL AND DOMINANT GLASS PORTION.
  - NO DEDUCTIONS SHALL BE MADE FOR PROJECTIONS NECESSARY TO THE BUILDING.
  - STAIRS & SERVICE SPACES NOT INCLUDED IN AREA CALCULATIONS.

THE MEASUREMENTS TAKEN TO ASSESS THE UNITS DESCRIBED HEREIN ARE BASED ON A VISUAL SURVEY OF EXISTING CONDITIONS. ALL DIMENSIONS ARE MEANT FOR AREA CALCULATIONS ONLY AND NOT FOR CONSTRUCTION. PICO ARCHITECTURE INC. DOES NOT ASSUME ANY OF THE DUTIES OR LIABILITIES OF THE DESIGNER, BUILDERS OR OWNERS OF THE SUBJECT PROPERTY. OWNERS, PROSPECTIVE TENANTS OR OTHERS WHO USE OR RELY ON THE CONTENTS OF THIS DOCUMENT DO SO WITH THE UNDERSTANDING AS TO THE LIMITATIONS OF THE DOCUMENT.



APPROXIMATE LOCATION OF SUITE ON MAIN FLOOR



1 KEYPLAN  
A1.1 NOT TO SCALE



2 MAIN FLOOR PLAN  
A1.1 SCALE: 3/16" = 1'-0"

pico ARCHITECTURE inc.  
2 - 107 Marion Street, Winnipeg, MB R2H 0T2 (204) 414-9191

212 NOTRE DAME AVENUE  
WINNIPEG, MB  
DATE: MAY 19, 2023

2301  
Project Number  
AT / JE  
Drawn By  
**A1.1**

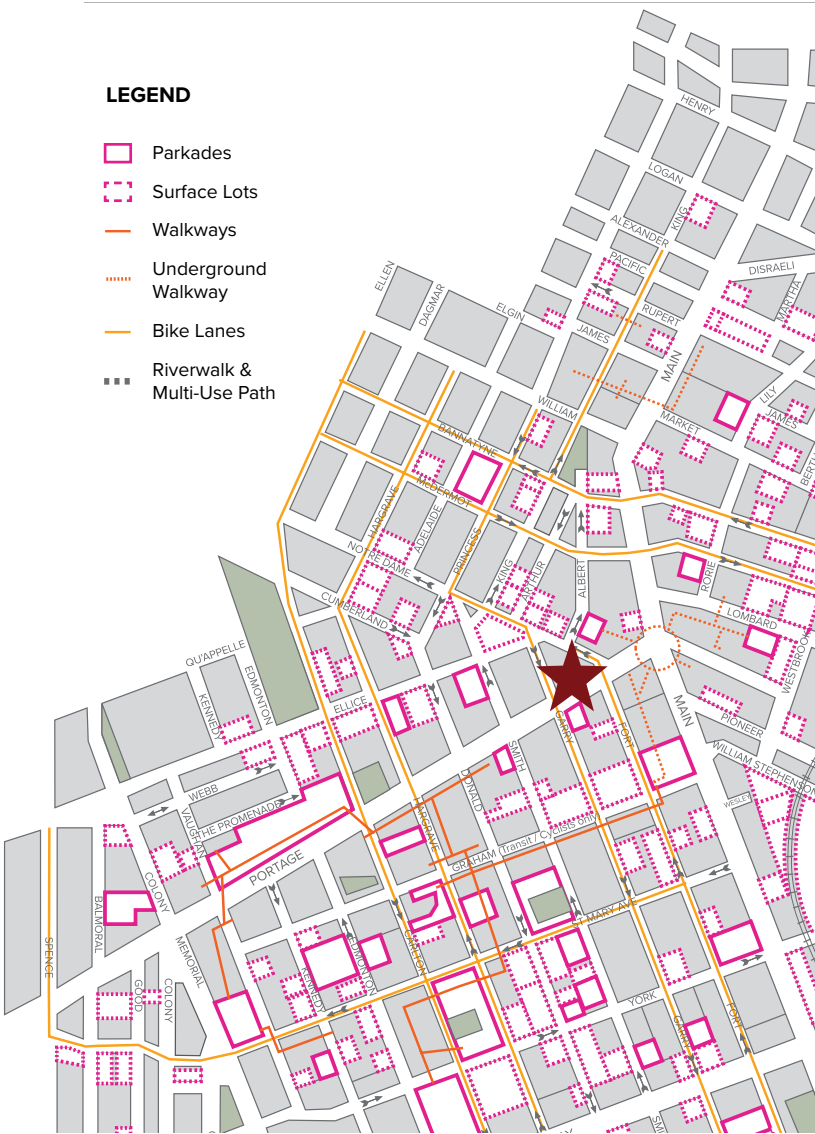
May not be exactly as shown. For information purposes only.

# The Exchange District and Downtown Winnipeg

## Downtown Winnipeg Parking Map

### LEGEND

- Parkades
- Surface Lots
- Walkways
- Underground Walkway
- Bike Lanes
- Riverwalk & Multi-Use Path



## Winnipeg's Exchange District

As a National Historic Site, Winnipeg's Exchange District features a vibrant mix featuring an abundance of heritage architecture, charming historic storefronts, redeveloped modern residential housing, educational facilities, a lively arts and culinary scene, and unique attractions, including

Red River Polytechnic College	Old Market Square
Manitoba Museum	Concert Hall
Royal Manitoba Theatre Centre	Stephen Juba Park
The Forks Market	Blue Cross Park
The Human Rights Museum	Canada Life Centre
The Children's Museum	True North Square
The Kings Head Pub	Deer + Almond
Nonsuch Brewing Co.	Clementine
Health Sciences Centre	Little Brown Jug
James Avenue Pump House	University of Winnipeg

## Winnipeg's Downtown

Winnipeg's Downtown offers a wealth of opportunities, diverse offerings, including both new and established shops and restaurants, provide a thriving marketplace for entrepreneurs looking to establish a presence in the city. With several major attractions such as the Canada Life Centre, the Forks, the Exchange District, the Canadian Museum of Human Rights, and True North Square, there are ample opportunities to attract customers and generate revenue.

Winnipeg's downtown district presents a compelling opportunity for entrepreneurs looking to establish and grow their business. With a diverse customer base, numerous attractions, and various festivals and events, the area offers ample opportunities to attract customers and thrive in the heart of the city.

A.S.H. Management Group Inc., Brokerage  
233 Portage Avenue, Suite 100  
Winnipeg, MB R3B 2A7  
Ph: 204-982-7973  
[ashmanagementgroup.com](http://ashmanagementgroup.com)

Jack S. Hurtig, B.A., B. Admin, Associate Broker  
Vice-President, Real Estate Brokerage  
Dir: 204-982-7978  
[jhurtig@ashmanagementgroup.com](mailto:jhurtig@ashmanagementgroup.com)

Tanya Spradbrow, Salesperson  
Real Estate Brokerage Coordinator  
Dir: 204-982-7979  
[tspradbrow@ashmanagementgroup.com](mailto:tspradbrow@ashmanagementgroup.com)